

MRP2 Rabbit mAb

Catalog No: #59439

Package Size: #59439-1 50ul #59439-2 100ul

Orders: order@signalwayantibody.com

Support: tech@signalwayantibody.com

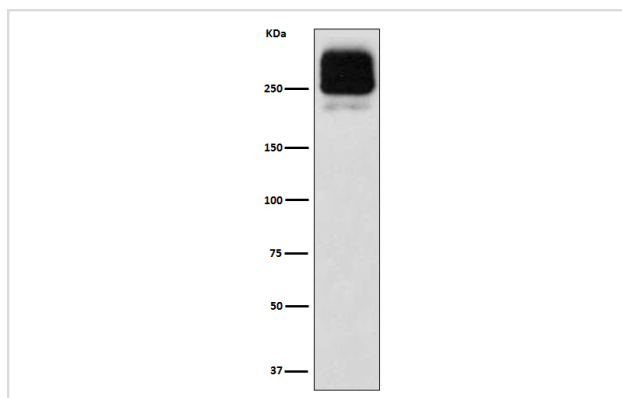
Description

Product Name	MRP2 Rabbit mAb
Host Species	Rabbit
Clonality	Monoclonal
Isotype	Rabbit IgG
Purification	Affinity-chromatography
Applications	WB ICC/IF FC
Species Reactivity	Human
Specificity	MRP2 Antibody detects endogenous levels of total MRP2
Immunogen Description	A synthesized peptide derived from human MRP2
Other Names	ABC30; abcC2; CMOAT1; cMRP;
Accession No.	Uniprot:Q92887
Uniprot	Q92887
Formulation	Rabbit IgG in phosphate buffered saline , pH 7.4, 150mM NaCl, 0.02% sodium azide and 50% glycerol.
Storage	Store at +4°C short term. Store at -20°C long term. Avoid freeze / thaw cycle.

Application Details

WB 1:500~1:2000 ICC/IF 1:50~1:200 FC 1:100

Images



Western blot analysis of MRP2 expression in HepG2 cell lysate.

Product Description

Mediates hepatobiliary excretion of numerous organic anions. May function as a cellular cisplatin transporter.

Background

Mediates hepatobiliary excretion of numerous organic anions. May function as a cellular cisplatin transporter.

Note: This product is for in vitro research use only