

Lipoprotein lipase Rabbit mAb

Catalog No: #59440

Package Size: #59440-1 50ul #59440-2 100ul

Orders: order@signalwayantibody.com

Support: tech@signalwayantibody.com

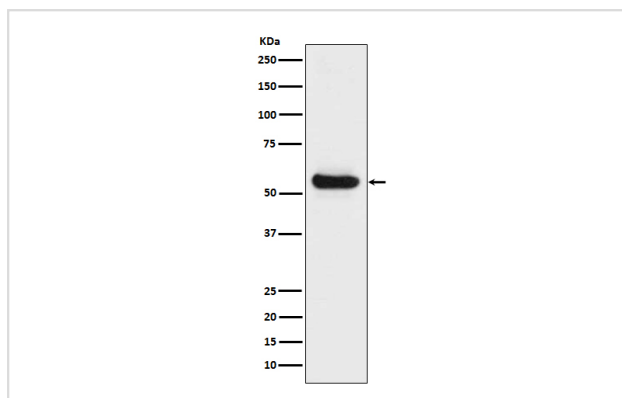
Description

Product Name	Lipoprotein lipase Rabbit mAb
Host Species	Rabbit
Clonality	Monoclonal
Isotype	Rabbit IgG
Purification	Affinity-chromatography
Applications	WB IHC
Species Reactivity	Human
Specificity	Lipoprotein lipase Antibody detects endogenous levels of total Lipoprotein lipase
Immunogen Description	A synthesized peptide derived from human Lipoprotein lipase
Other Names	HDLCQ11; LIPD; Lipoprotein lipase; LPL; LPL protein;
Accession No.	Uniprot:P06858
Uniprot	P06858
Formulation	Rabbit IgG in phosphate buffered saline , pH 7.4, 150mM NaCl, 0.02% sodium azide and 50% glycerol.
Storage	Store at +4°C short term. Store at -20°C long term. Avoid freeze / thaw cycle.

Application Details

WB 1:1000~1:5000 IHC 1:50~1:200

Images



Western blot analysis of Lipoprotein lipase expression in Human fetal liver lysate.

Product Description

The primary function of this lipase is the hydrolysis of triglycerides of circulating chylomicrons and very low density lipoproteins (VLDL). Binding to heparin sulfate proteoglycans at the cell surface is vital to the function. The apolipoprotein, APOC2, acts as a coactivator of LPL activity in the presence of lipids on the luminal surface of vascular endothelium.

Background

The primary function of this lipase is the hydrolysis of triglycerides of circulating chylomicrons and very low density lipoproteins (VLDL). Binding to heparin sulfate proteoglycans at the cell surface is vital to the function. The apolipoprotein, APOC2, acts as a coactivator of LPL activity in the presence of lipids on the luminal surface of vascular endothelium.

Note: This product is for in vitro research use only