

SDHB Rabbit mAb

Catalog No: #59441

Package Size: #59441-1 50ul #59441-2 100ul

Orders: order@signalwayantibody.com

Support: tech@signalwayantibody.com

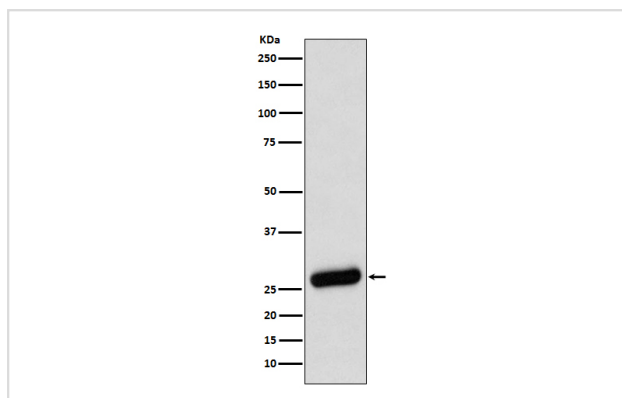
Description

Product Name	SDHB Rabbit mAb
Host Species	Rabbit
Clonality	Monoclonal
Isotype	Rabbit IgG
Purification	Affinity-chromatography
Applications	WB IHC IP FC
Species Reactivity	Human Mouse Rat
Specificity	SDHB Antibody detects endogenous levels of total SDHB
Immunogen Description	A synthesized peptide derived from human SDHB
Other Names	Iron-sulfur subunit of complex II; SDHB; SDH; SDH1; PGL4;
Accession No.	Uniprot:P21912
Uniprot	P21912
Formulation	Rabbit IgG in phosphate buffered saline , pH 7.4, 150mM NaCl, 0.02% sodium azide and 50% glycerol.
Storage	Store at +4°C short term. Store at -20°C long term. Avoid freeze / thaw cycle.

Application Details

WB 1:500~1:2000 IHC 1:50~1:200 IP 1:50 FC 1:50

Images



Western blot analysis of SDHB expression in A431 cell lysate.

Product Description

Iron-sulfur protein (IP) subunit of succinate dehydrogenase (SDH) that is involved in complex II of the mitochondrial electron transport chain and is responsible for transferring electrons from succinate to ubiquinone (coenzyme Q).

Background

Iron-sulfur protein (IP) subunit of succinate dehydrogenase (SDH) that is involved in complex II of the mitochondrial electron transport chain and is responsible for transferring electrons from succinate to ubiquinone (coenzyme Q).

Note: This product is for in vitro research use only