

Annexin A2 Rabbit mAb

Catalog No: #59442

Package Size: #59442-1 50ul #59442-2 100ul

Orders: order@signalwayantibody.com

Support: tech@signalwayantibody.com

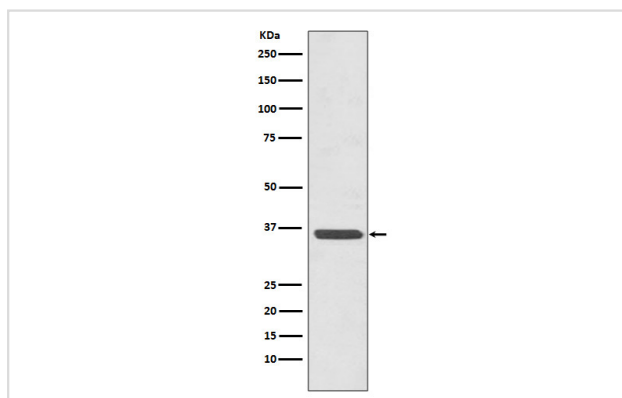
Description

Product Name	Annexin A2 Rabbit mAb
Host Species	Rabbit
Clonality	Monoclonal
Isotype	Rabbit IgG
Purification	Affinity-chromatography
Applications	WB IHC ICC/IF FC
Species Reactivity	Human Mouse Rat
Specificity	Annexin A2 Antibody detects endogenous levels of total Annexin A2
Immunogen Description	A synthesized peptide derived from human Annexin A2
Other Names	Annexin A2; Annexin II; Annexin-2; Calpactin I heavy chain; PAP-IV; Protein I; p36; ANXA2; ANX2; ANX2L4; CAL1H; LPC2D; Annexin2; HEL S 270;
Accession No.	Uniprot:P07355
Uniprot	P07355
Formulation	Rabbit IgG in phosphate buffered saline , pH 7.4, 150mM NaCl, 0.02% sodium azide and 50% glycerol.
Storage	Store at +4°C short term. Store at -20°C long term. Avoid freeze / thaw cycle.

Application Details

WB 1:500~1:2000 IHC 1:50~1:200 ICC/IF 1:50~1:200 FC 1:50

Images



Western blot analysis of Annexin A2 expression in HeLa cell lysate.

Product Description

Originally identified as a protein inhibitor of phospholipase A2, annexin A2 has subsequently been shown to interact with an array of protein and non-protein partners, including F-actin, spectrin, SNARE complexes, RNA, and virus particles.

Background

Originally identified as a protein inhibitor of phospholipase A2, annexin A2 has subsequently been shown to interact with an array of protein and non-protein partners, including F-actin, spectrin, SNARE complexes, RNA, and virus particles.

Note: This product is for in vitro research use only