

## LOX Rabbit mAb

Catalog No: #59443

Package Size: #59443-1 50ul #59443-2 100ul

Orders: order@signalwayantibody.com

Support: tech@signalwayantibody.com

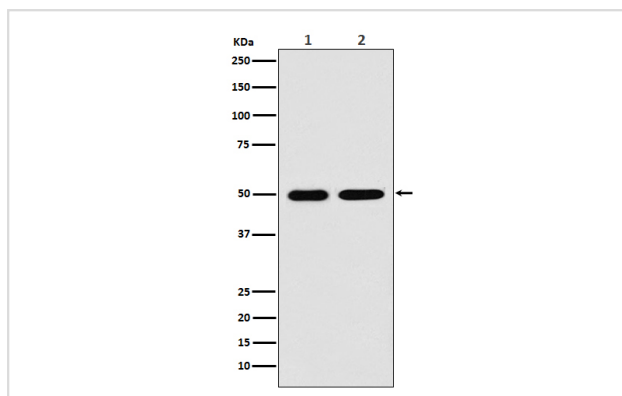
## Description

Product Name	LOX Rabbit mAb
Host Species	Rabbit
Clonality	Monoclonal
Isotype	Rabbit IgG
Purification	Affinity-chromatography
Applications	WB IHC ICC/IF IP FC
Species Reactivity	Human Mouse Rat
Specificity	LOX Antibody detects endogenous levels of total LOX
Immunogen Description	A synthesized peptide derived from human LOX
Other Names	lox; LYOX; Lysyl oxidase; Protein lysine 6 oxidase;
Accession No.	Uniprot:P28300
Uniprot	P28300
Formulation	Rabbit IgG in phosphate buffered saline , pH 7.4, 150mM NaCl, 0.02% sodium azide and 50% glycerol.
Storage	Store at +4°C short term. Store at -20°C long term. Avoid freeze / thaw cycle.

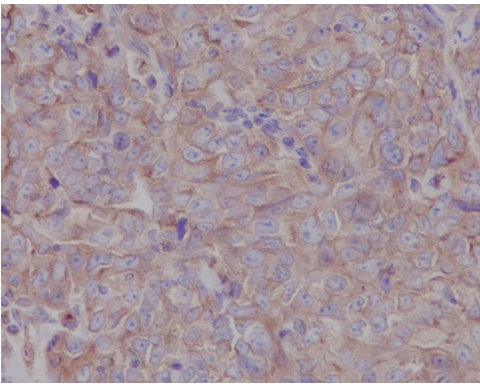
## Application Details

WB 1:500~1:2000 IHC 1:50~1:200 ICC/IF 1:50~1:200 IP 1:50 FC 1:60

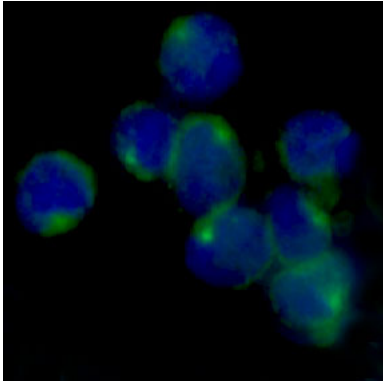
## Images



Western blot analysis of LOX expression in (1) Jurkat cell lysate; (2) Mouse brain lysate.



Immunohistochemical analysis of paraffin-embedded human breast, using LOX Antibody.



Immunofluorescent analysis of Jurkat cells, using LOX Antibody .

## Product Description

Responsible for the post-translational oxidative deamination of peptidyl lysine residues in precursors to fibrous collagen and elastin. In addition to cross-linking of extracellular matrix proteins, may have a direct role in tumor suppression.

## Background

Responsible for the post-translational oxidative deamination of peptidyl lysine residues in precursors to fibrous collagen and elastin. In addition to cross-linking of extracellular matrix proteins, may have a direct role in tumor suppression.

Note: This product is for in vitro research use only