

CRYAB Rabbit mAb

Catalog No: #59463

Package Size: #59463-1 50ul #59463-2 100ul

Orders: order@signalwayantibody.com

Support: tech@signalwayantibody.com

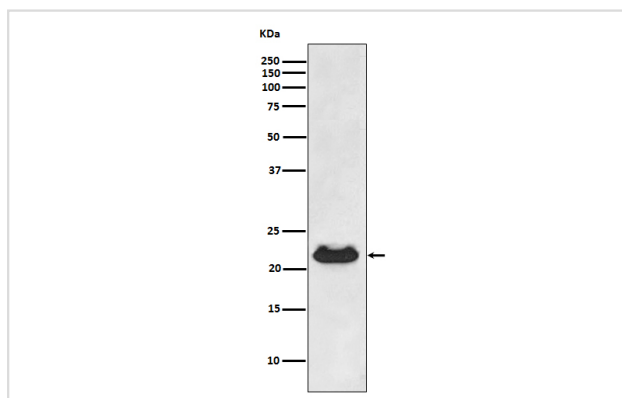
Description

Product Name	CRYAB Rabbit mAb
Host Species	Rabbit
Clonality	Monoclonal
Isotype	Rabbit IgG
Purification	Affinity-chromatography
Applications	WB IHC ICC/IF IP
Species Reactivity	Human Rat
Specificity	CRYAB Antibody detects endogenous levels of total CRYAB
Immunogen Description	A synthesized peptide derived from human CRYAB
Other Names	AACRYA; Alpha B crystallin; Alpha-crystallin B chain; CRYA2; Cryab; Crystallin alpha B; CTPP2; Heat shock 20 kD like protein; HspB5;
Accession No.	Uniprot:P02511
Uniprot	P02511
Formulation	Rabbit IgG in phosphate buffered saline , pH 7.4, 150mM NaCl, 0.02% sodium azide and 50% glycerol.
Storage	Store at +4°C short term. Store at -20°C long term. Avoid freeze / thaw cycle.

Application Details

WB 1:500~1:2000 IHC 1:50~1:200 ICC/IF 1:50~1:200 IP 1:80

Images



Western blot analysis of CRYAB expression in human fetal heart lysate.

Product Description

May contribute to the transparency and refractive index of the lens.

Background

May contribute to the transparency and refractive index of the lens.

Note: This product is for in vitro research use only