

PI3 Kinase p85 alpha Rabbit mAb

Catalog No: #59474

Package Size: #59474-1 50ul #59474-2 100ul

Orders: order@signalwayantibody.com

Support: tech@signalwayantibody.com

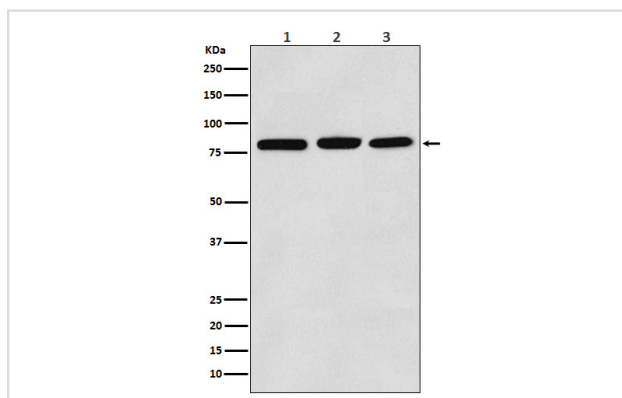
Description

Product Name	PI3 Kinase p85 alpha Rabbit mAb
Host Species	Rabbit
Clonality	Monoclonal
Isotype	Rabbit IgG
Purification	Affinity-chromatography
Applications	WB
Species Reactivity	Human Mouse Rat
Specificity	PI3 Kinase p85 alpha Antibody detects endogenous levels of total PI3 Kinase p85 alpha
Immunogen Description	A synthesized peptide derived from human PI3 Kinase p85 alpha
Other Names	GRB1; p85 alpha; PI3-kinase subunit p85-alpha; PI3K; PI3K regulatory subunit alpha; Pik3r1; PtdIns 3 kinase p85 alpha;
Accession No.	Uniprot:P27986
Uniprot	P27986
Formulation	Rabbit IgG in phosphate buffered saline , pH 7.4, 150mM NaCl, 0.02% sodium azide and 50% glycerol.
Storage	Store at +4°C short term. Store at -20°C long term. Avoid freeze / thaw cycle.

Application Details

WB 1:500~1:2000

Images



Western blot analysis of PI3 Kinase p85 alpha expression in (1) K562 cell lysate; (2) Raw 264.7 cell lysate; (3) C6 cell lysate.

Product Description

Binds to activated (phosphorylated) protein-Tyr kinases, through its SH2 domain, and acts as an adapter, mediating the association of the p110 catalytic unit to the plasma membrane. Necessary for the insulin-stimulated increase in glucose uptake and glycogen synthesis in insulin-sensitive tissues.

Background

Binds to activated (phosphorylated) protein-Tyr kinases, through its SH2 domain, and acts as an adapter, mediating the association of the p110 catalytic unit to the plasma membrane. Necessary for the insulin-stimulated increase in glucose uptake and glycogen synthesis in insulin-sensitive tissues.

Note: This product is for in vitro research use only