

## WASL Rabbit mAb

Catalog No: #59475

Package Size: #59475-1 50ul #59475-2 100ul

Orders: order@signalwayantibody.com

Support: tech@signalwayantibody.com

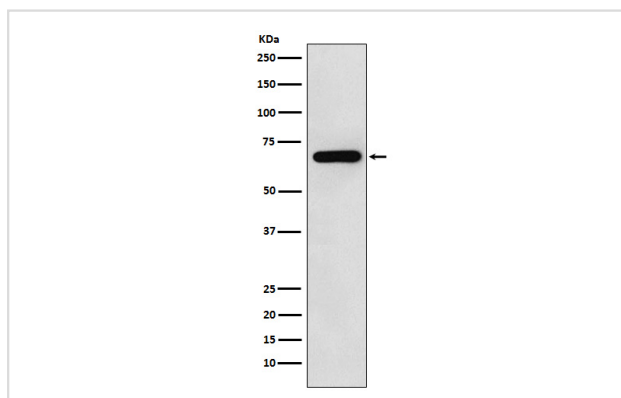
## Description

Product Name	WASL Rabbit mAb
Host Species	Rabbit
Clonality	Monoclonal
Isotype	Rabbit IgG
Purification	Affinity-chromatography
Applications	WB IHC ICC/IF FC
Species Reactivity	Human Mouse
Specificity	WASL Antibody detects endogenous levels of total WASL
Immunogen Description	A synthesized peptide derived from human WASL
Other Names	N-WASP; Neural Wiskott Aldrich syndrome protein; NWASP; Wasl; WASPB; Wiskott Aldrich syndrome gene like;
Accession No.	Uniprot:O00401
Uniprot	O00401
Formulation	Rabbit IgG in phosphate buffered saline , pH 7.4, 150mM NaCl, 0.02% sodium azide and 50% glycerol.
Storage	Store at +4°C short term. Store at -20°C long term. Avoid freeze / thaw cycle.

## Application Details

WB 1:500~1:2000 IHC 1:50~1:200 ICC/IF 1:50~1:200 FC 1:50

## Images



Western blot analysis of WASL expression in HeLa cell lysate.

## Product Description

Regulates actin polymerization by stimulating the actin-nucleating activity of the Arp2/3 complex. Binds to HSF1/HSTF1 and forms a complex on heat shock promoter elements (HSE) that negatively regulates HSP90 expression.

## Background

---

Regulates actin polymerization by stimulating the actin-nucleating activity of the Arp2/3 complex. Binds to HSF1/HSTF1 and forms a complex on heat shock promoter elements (HSE) that negatively regulates HSP90 expression.

---

Note: This product is for in vitro research use only