

## GCN2 Rabbit mAb

Catalog No: #59479

Package Size: #59479-1 50ul #59479-2 100ul

Orders: [order@signalwayantibody.com](mailto:order@signalwayantibody.com)Support: [tech@signalwayantibody.com](mailto:tech@signalwayantibody.com)

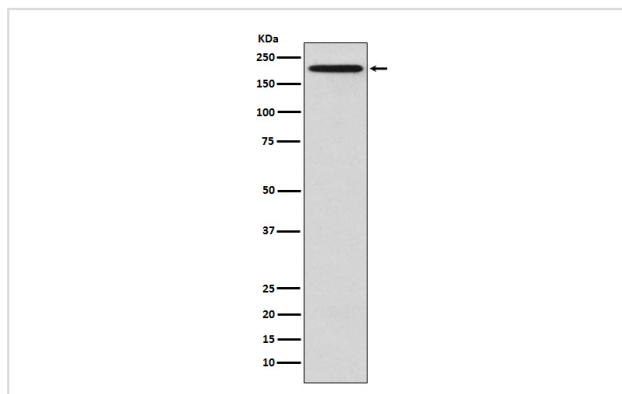
## Description

Product Name	GCN2 Rabbit mAb
Host Species	Rabbit
Clonality	Monoclonal
Isotype	Rabbit IgG
Purification	Affinity-chromatography
Applications	WB IHC ICC/IF FC
Species Reactivity	Human
Specificity	GCN2 Antibody detects endogenous levels of total GCN2
Immunogen Description	A synthesized peptide derived from human GCN2
Other Names	Eif2ak4; Eukaryotic Translation Initiation Factor 2 alpha kinase 4; GCN2; GCN2 eIF2alpha kinase; GCN2 like protein; MGCN2;
Accession No.	Uniprot:Q9P2K8
Uniprot	Q9P2K8
Calculated MW	187kDa
Formulation	Rabbit IgG in phosphate buffered saline , pH 7.4, 150mM NaCl, 0.02% sodium azide and 50% glycerol.
Storage	Store at +4°C short term. Store at -20°C long term. Avoid freeze / thaw cycle.

## Application Details

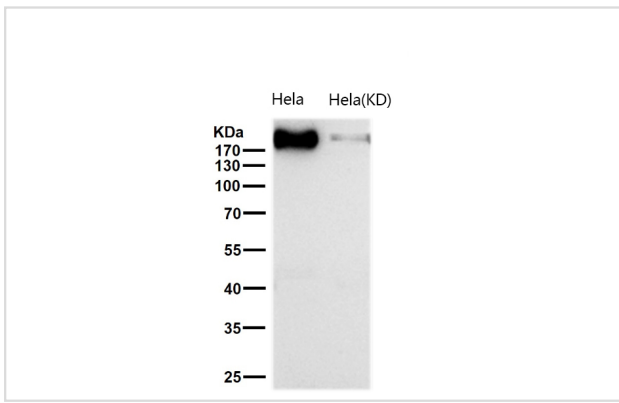
WB 1:500~1:2000 IHC 1:50~1:200 ICC/IF 1:50~1:200 FC 1:100

## Images



Western blot analysis of GCN2 expression in HeLa cell lysate.

All lanes use the Antibody at 1:1K dilution for 1 hour at room temperature.



## Product Description

Can phosphorylate the alpha subunit of EIF2 and may mediate translational control.

## Background

Can phosphorylate the alpha subunit of EIF2 and may mediate translational control.

Note: This product is for in vitro research use only