

Staufen Rabbit mAb

Catalog No: #59480

Package Size: #59480-1 50ul #59480-2 100ul

Orders: order@signalwayantibody.com

Support: tech@signalwayantibody.com

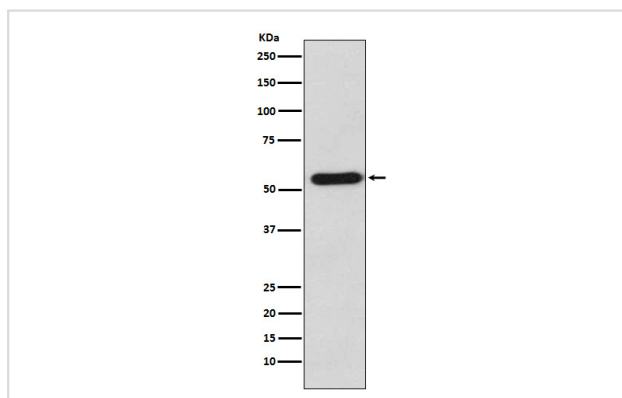
Description

Product Name	Staufen Rabbit mAb
Host Species	Rabbit
Clonality	Monoclonal
Isotype	Rabbit IgG
Purification	Affinity-chromatography
Applications	WB ICC/IF FC
Species Reactivity	Human Mouse Rat
Specificity	Staufen Antibody detects endogenous levels of total Staufen
Immunogen Description	A synthesized peptide derived from human Staufen
Other Names	Double-stranded RNA-binding protein Staufen homolog 1; PPP1R150; STAU; staufen; Staufen RNA binding protein (Drosophila); Staufen, Drosophila, homolog of, 1;
Accession No.	Uniprot:O95793
Uniprot	O95793
Formulation	Rabbit IgG in phosphate buffered saline , pH 7.4, 150mM NaCl, 0.02% sodium azide and 50% glycerol.
Storage	Store at +4°C short term. Store at -20°C long term. Avoid freeze / thaw cycle.

Application Details

WB 1:500~1:2000 ICC/IF 1:50~1:200 FC 1:500

Images



Western blot analysis of Staufen expression in K562 cell lysate.

Product Description

Binds double-stranded RNA (regardless of the sequence) and tubulin. May play a role in specific positioning of mRNAs at given sites in the cell by cross-linking cytoskeletal and RNA components, and in stimulating their translation at the site.

Background

Binds double-stranded RNA (regardless of the sequence) and tubulin. May play a role in specific positioning of mRNAs at given sites in the cell by cross-linking cytoskeletal and RNA components, and in stimulating their translation at the site.

Note: This product is for in vitro research use only