

## p23 Rabbit mAb

Catalog No: #59484

Package Size: #59484-1 50ul #59484-2 100ul

Orders: order@signalwayantibody.com

Support: tech@signalwayantibody.com

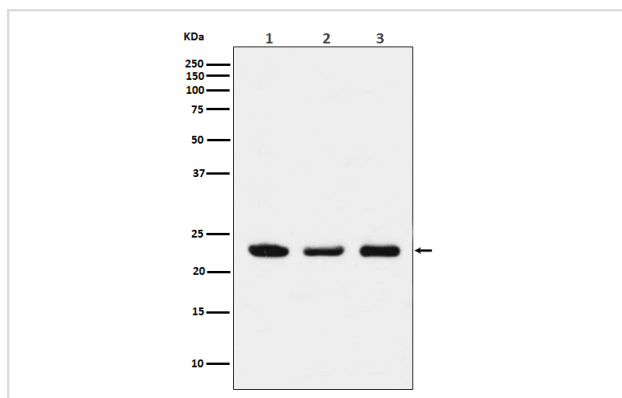
## Description

Product Name	p23 Rabbit mAb
Host Species	Rabbit
Clonality	Monoclonal
Isotype	Rabbit IgG
Purification	Affinity-chromatography
Applications	WB ICC/IF IP
Species Reactivity	Human Mouse Rat
Specificity	p23 Antibody detects endogenous levels of total p23
Immunogen Description	A synthesized peptide derived from human p23
Other Names	cPGES; Cytosolic prostaglandin E synthase; Hsp90 co chaperone; P23; Sid 3177; TEBP;
Accession No.	Uniprot:Q15185
Uniprot	Q15185
Formulation	Rabbit IgG in phosphate buffered saline , pH 7.4, 150mM NaCl, 0.02% sodium azide and 50% glycerol.
Storage	Store at +4°C short term. Store at -20°C long term. Avoid freeze / thaw cycle.

## Application Details

WB 1:1000~1:5000 ICC/IF 1:50~1:200 IP 1:50

## Images



Western blot analysis of p23 expression in (1) HeLa cell lysate; (2) NIH/3T3 cell lysate; (3) PC12 cell lysate.

## Product Description

Molecular chaperone that localizes to genomic response elements in a hormone-dependent manner and disrupts receptor-mediated transcriptional activation, by promoting disassembly of transcriptional regulatory complexes.

## Background

---

Molecular chaperone that localizes to genomic response elements in a hormone-dependent manner and disrupts receptor-mediated transcriptional activation, by promoting disassembly of transcriptional regulatory complexes.

---

Note: This product is for in vitro research use only