

NF2 / Merlin Rabbit mAb

Catalog No: #59489

Package Size: #59489-1 50ul #59489-2 100ul

Orders: order@signalwayantibody.com

Support: tech@signalwayantibody.com

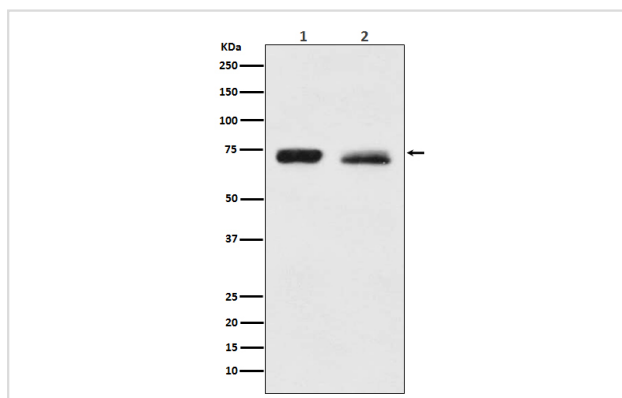
Description

Product Name	NF2 / Merlin Rabbit mAb
Host Species	Rabbit
Clonality	Monoclonal
Isotype	Rabbit IgG
Purification	Affinity-chromatography
Applications	WB IP
Species Reactivity	Human Mouse Rat
Specificity	NF2 / Merlin Antibody detects endogenous levels of total NF2 / Merlin
Immunogen Description	A synthesized peptide derived from human NF2 / Merlin
Other Names	ACN; BANF; Merlin; Moesin ezrin radixin like protein; Neurofibromatosis 2; Neurofibromin 2; Nf2; SCH; Schwannomerlin;
Accession No.	Uniprot:P35240
Uniprot	P35240
Formulation	Rabbit IgG in phosphate buffered saline , pH 7.4, 150mM NaCl, 0.02% sodium azide and 50% glycerol.
Storage	Store at +4°C short term. Store at -20°C long term. Avoid freeze / thaw cycle.

Application Details

WB 1:1000~1:5000 IP 1:50

Images



Western blot analysis of NF2 / Merlin expression in (1) HeLa cell lysate; (2) PC3 cell lysate.

Product Description

Probable regulator of the Hippo/SWH (Sav/Wts/Hpo) signaling pathway, a signaling pathway that plays a pivotal role in tumor suppression by restricting proliferation and promoting apoptosis.

Background

Probable regulator of the Hippo/SWH (Sav/Wts/Hpo) signaling pathway, a signaling pathway that plays a pivotal role in tumor suppression by restricting proliferation and promoting apoptosis.

Note: This product is for in vitro research use only