

Ferritin Light Chain Rabbit mAb

Catalog No: #59491

Package Size: #59491-1 50ul #59491-2 100ul

Orders: order@signalwayantibody.com

Support: tech@signalwayantibody.com

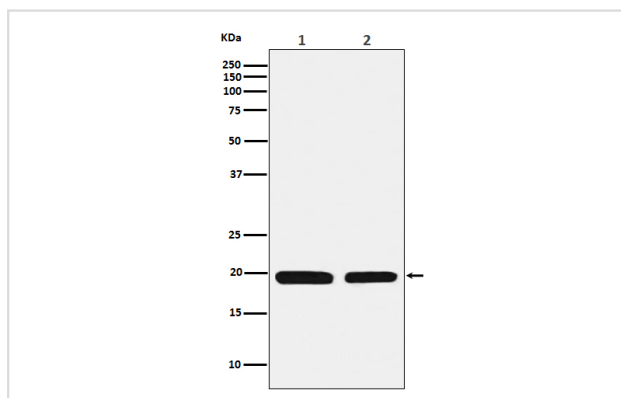
Description

Product Name	Ferritin Light Chain Rabbit mAb
Host Species	Rabbit
Clonality	Monoclonal
Isotype	Rabbit IgG
Purification	Affinity-chromatography
Applications	WB IP FC
Species Reactivity	Human Mouse Rat
Specificity	Ferritin Light Chain Antibody detects endogenous levels of total Ferritin Light Chain
Immunogen Description	A synthesized peptide derived from human Ferritin Light Chain
Other Names	Ferritin L chain; Ferritin L subunit; Ferritin light chain; Ferritin light polypeptide; ferritin light polypeptide like 3; FTL; LFTD; NBIA 3;
Accession No.	Uniprot:P02792
Uniprot	P02792
Formulation	Rabbit IgG in phosphate buffered saline , pH 7.4, 150mM NaCl, 0.02% sodium azide and 50% glycerol.
Storage	Store at +4°C short term. Store at -20°C long term. Avoid freeze / thaw cycle.

Application Details

WB 1:1000~1:5000 IP 1:50 FC 1:100

Images



Western blot analysis of Ferritin Light Chain expression in (1) HepG2 cell lysate; (2) Mouse liver lysate.

Product Description

Stores iron in a soluble, non-toxic, readily available form. Important for iron homeostasis. Iron is taken up in the ferrous form and deposited as ferric hydroxides after oxidation. Also plays a role in delivery of iron to cells. Mediates iron uptake in capsule cells of the developing kidney.

Background

Stores iron in a soluble, non-toxic, readily available form. Important for iron homeostasis. Iron is taken up in the ferrous form and deposited as ferric hydroxides after oxidation. Also plays a role in delivery of iron to cells. Mediates iron uptake in capsule cells of the developing kidney.

Note: This product is for in vitro research use only