

FEN1 Rabbit mAb

Catalog No: #59492

Package Size: #59492-1 50ul #59492-2 100ul

Orders: order@signalwayantibody.com

Support: tech@signalwayantibody.com

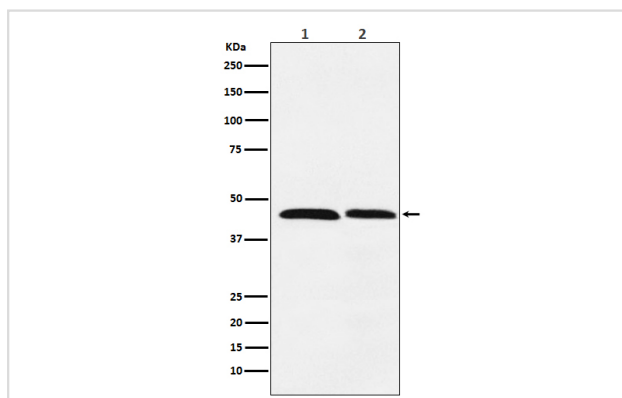
Description

Product Name	FEN1 Rabbit mAb
Host Species	Rabbit
Clonality	Monoclonal
Isotype	Rabbit IgG
Purification	Affinity-chromatography
Applications	WB IHC
Species Reactivity	Human Mouse Rat
Specificity	FEN1 Antibody detects endogenous levels of total FEN1
Immunogen Description	A synthesized peptide derived from human FEN1
Other Names	DNase IV; FEN1; Flap endonuclease 1; Flap structure specific endonuclease 1; hFEN-1; hFEN1; Maturation factor 1; MF1; Rad2;
Accession No.	Uniprot:P39748
Uniprot	P39748
Formulation	Rabbit IgG in phosphate buffered saline , pH 7.4, 150mM NaCl, 0.02% sodium azide and 50% glycerol.
Storage	Store at +4°C short term. Store at -20°C long term. Avoid freeze / thaw cycle.

Application Details

WB 1:500~1:2000 IHC 1:100~1:500

Images



Western blot analysis of FEN1 expression in (1) HeLa cell lysate; (2) Daudi cell lysate.

Product Description

Acts as a genome stabilization factor that prevents flaps from equilibrating into structures that lead to duplications and deletions. Also possesses 5'-3' exonuclease activity on nicked or gapped double-stranded DNA, and exhibits RNase H activity. Also involved in replication and repair of rDNA and in repairing mitochondrial DNA.

Background

Acts as a genome stabilization factor that prevents flaps from equilibrating into structures that lead to duplications and deletions. Also possesses 5'-3' exonuclease activity on nicked or gapped double-stranded DNA, and exhibits RNase H activity. Also involved in replication and repair of rDNA and in repairing mitochondrial DNA.

Note: This product is for in vitro research use only