

Rad50 Rabbit mAb

Catalog No: #59502

Package Size: #59502-1 50ul #59502-2 100ul

Orders: order@signalwayantibody.com

Support: tech@signalwayantibody.com

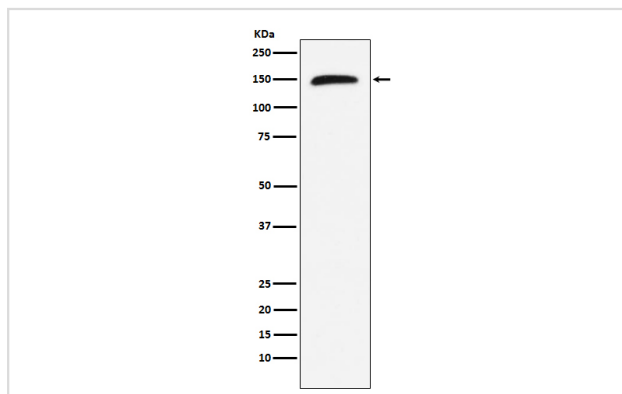
Description

Product Name	Rad50 Rabbit mAb
Host Species	Rabbit
Clonality	Monoclonal
Isotype	Rabbit IgG
Purification	Affinity-chromatography
Applications	WB ICC/IF
Species Reactivity	Human Mouse Rat
Specificity	Rad50 Antibody detects endogenous levels of total Rad50
Immunogen Description	A synthesized peptide derived from human Rad50
Other Names	hRAD50; Mrell; NBSLD; Rad 50; RAD50 2; rad50; RAD50 homolog (S cerevisiae); RAD50 PEN; RAD502; Rad50l;
Accession No.	Uniprot:Q92878
Uniprot	Q92878
Calculated MW	154kDa
Formulation	Rabbit IgG in phosphate buffered saline , pH 7.4, 150mM NaCl, 0.02% sodium azide and 50% glycerol.
Storage	Store at +4°C short term. Store at -20°C long term. Avoid freeze / thaw cycle.

Application Details

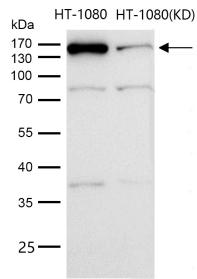
WB 1:500~1:2000 ICC/IF 1:50~1:200

Images



Western blot analysis of Rad50 expression in Jurkat cell lysate;

All lanes use the Antibody at 1:1K dilution for 1 hour at room temperature.



Product Description

Component of the MRN complex, which plays a central role in double-strand break (DSB) repair, DNA recombination, maintenance of telomere integrity and meiosis. The complex possesses single-strand endonuclease activity and double-strand-specific 3'-5' exonuclease activity, which are provided by MRE11A.

Background

Component of the MRN complex, which plays a central role in double-strand break (DSB) repair, DNA recombination, maintenance of telomere integrity and meiosis. The complex possesses single-strand endonuclease activity and double-strand-specific 3'-5' exonuclease activity, which are provided by MRE11A.

Note: This product is for in vitro research use only