

CLOCK Rabbit mAb

Catalog No: #59503

Package Size: #59503-1 50ul #59503-2 100ul

Orders: order@signalwayantibody.com

Support: tech@signalwayantibody.com

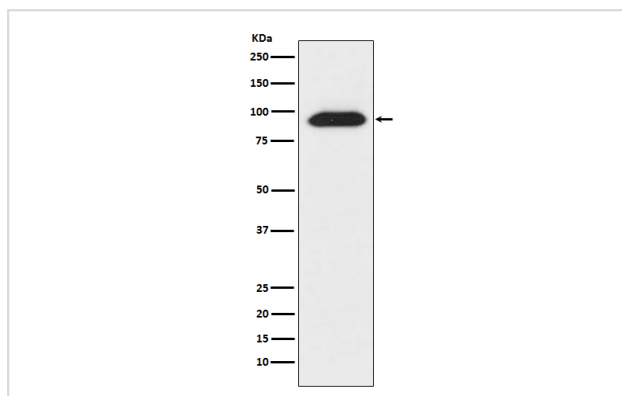
Description

Product Name	CLOCK Rabbit mAb
Host Species	Rabbit
Clonality	Monoclonal
Isotype	Rabbit IgG
Purification	Affinity-chromatography
Applications	WB IHC ICC/IF FC
Species Reactivity	Human Mouse Rat
Specificity	CLOCK Antibody detects endogenous levels of total CLOCK
Immunogen Description	A synthesized peptide derived from human CLOCK
Other Names	hCLOCK; Class E basic helix-loop-helix protein 8; bHLHe8; CLOCK; BHLHE8;
Accession No.	Uniprot:O15516
Uniprot	O15516
Formulation	Rabbit IgG in phosphate buffered saline , pH 7.4, 150mM NaCl, 0.02% sodium azide and 50% glycerol.
Storage	Store at +4°C short term. Store at -20°C long term. Avoid freeze / thaw cycle.

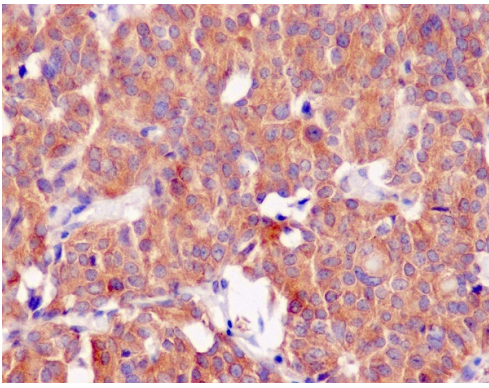
Application Details

WB 1:1000~1:5000 IHC 1:50~1:200 ICC/IF 1:50~1:200 FC 1:50

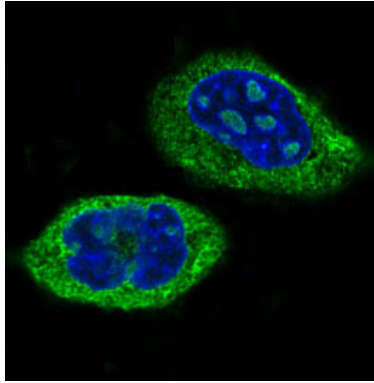
Images



Western blot analysis of CLOCK expression in 293T cell lysate.



Immunohistochemical analysis of paraffin-embedded human thyroid carcinoma, using CLOCK Antibody.



Immunofluorescent analysis of HeLa cells, using CLOCK Antibody .

Product Description

Circadian rhythms govern many key physiological processes that fluctuate with a period of approximately 24 hours. These processes include the sleep-wake cycle, glucose, lipid and drug metabolism, heart rate, hormone secretion, renal blood flow, and body temperature, as well as basic cellular processes such as DNA repair and the timing of the cell division cycle.

Background

Circadian rhythms govern many key physiological processes that fluctuate with a period of approximately 24 hours. These processes include the sleep-wake cycle, glucose, lipid and drug metabolism, heart rate, hormone secretion, renal blood flow, and body temperature, as well as basic cellular processes such as DNA repair and the timing of the cell division cycle.

Note: This product is for in vitro research use only