

Factor H Rabbit mAb

Catalog No: #59504

Package Size: #59504-1 50ul #59504-2 100ul

Orders: order@signalwayantibody.com

Support: tech@signalwayantibody.com

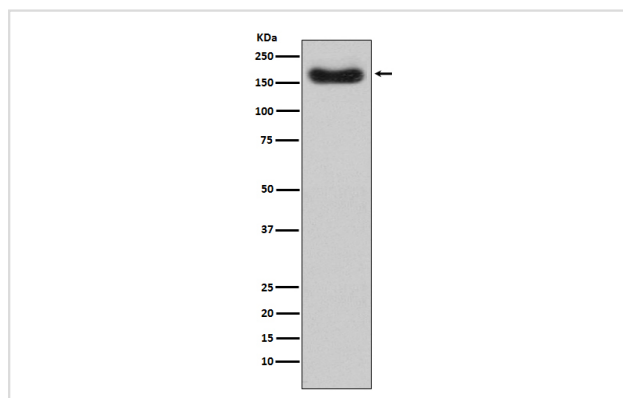
Description

Product Name	Factor H Rabbit mAb
Host Species	Rabbit
Clonality	Monoclonal
Isotype	Rabbit IgG
Purification	Affinity-chromatography
Applications	WB ICC
Species Reactivity	Human
Specificity	Factor H Antibody detects endogenous levels of total Factor H
Immunogen Description	A synthesized peptide derived from human Factor H
Other Names	AHUS1; AMBP1; ARMD4; ARMS1; beta1H; CFH; CFHL3; complement factor H, isoform b; Factor H; factor H like 1; FHL1; HF1; HF2; HUS;
Accession No.	Uniprot:P08603
Uniprot	P08603
Formulation	Rabbit IgG in phosphate buffered saline , pH 7.4, 150mM NaCl, 0.02% sodium azide and 50% glycerol.
Storage	Store at +4°C short term. Store at -20°C long term. Avoid freeze / thaw cycle.

Application Details

WB 1:500~1:2000 ICC/IF 1:50~1:200

Images



Western blot analysis of Factor H expression in human plasma lysate.

Product Description

Factor H functions as a cofactor in the inactivation of C3b by factor I and also increases the rate of dissociation of the C3bBb complex (C3 convertase) and the (C3b)NBB complex (C5 convertase) in the alternative complement pathway.

Background

Factor H functions as a cofactor in the inactivation of C3b by factor I and also increases the rate of dissociation of the C3bBb complex (C3 convertase) and the (C3b)NBB complex (C5 convertase) in the alternative complement pathway.

Note: This product is for in vitro research use only