

MEIS1 Rabbit mAb

Catalog No: #59505

Package Size: #59505-1 50ul #59505-2 100ul

Orders: order@signalwayantibody.com

Support: tech@signalwayantibody.com

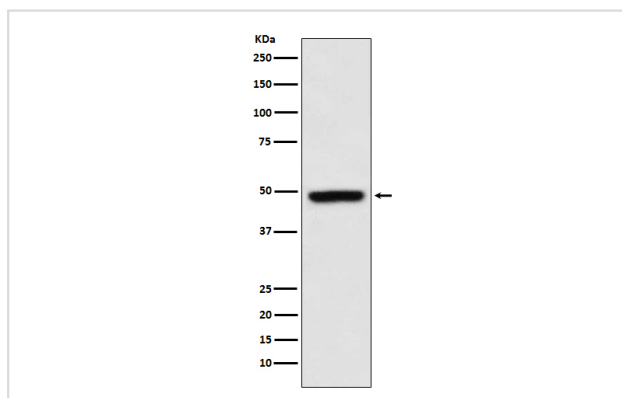
Description

Product Name	MEIS1 Rabbit mAb
Host Species	Rabbit
Clonality	Monoclonal
Isotype	Rabbit IgG
Purification	Affinity-chromatography
Applications	WB IP FC
Species Reactivity	Human Mouse Rat
Specificity	MEIS1 Antibody detects endogenous levels of total MEIS1
Immunogen Description	A synthesized peptide derived from human MEIS1
Other Names	Homeo box protein Meis1; Leukemogenic homolog protein; MEIS 1; Meis homeo box 1; Meis1; Meis1 mouse homolog; MEIS1 protein;
Accession No.	Uniprot:O00470
Uniprot	O00470
Formulation	Rabbit IgG in phosphate buffered saline , pH 7.4, 150mM NaCl, 0.02% sodium azide and 50% glycerol.
Storage	Store at +4°C short term. Store at -20°C long term. Avoid freeze / thaw cycle.

Application Details

WB 1:1000~1:5000 IP 1:50 FC 1:50

Images



Western blot analysis of MEIS1 expression in K562 cell lysate.

Product Description

MEIS proteins belong to the TALE (Three Amino Acid Loop Extension) homeobox containing transcription factor family. MEIS1 has been associated with leukemogenesis and neuroblastoma.

Background

MEIS proteins belong to the TALE (Three Amino Acid Loop Extension) homeobox containing transcription factor family. MEIS1 has been associated with leukemogenesis and neuroblastoma.

Note: This product is for in vitro research use only