

Carbonic anhydrase 2 Rabbit mAb

Catalog No: #59506

Package Size: #59506-1 50ul #59506-2 100ul

Orders: order@signalwayantibody.comSupport: tech@signalwayantibody.com

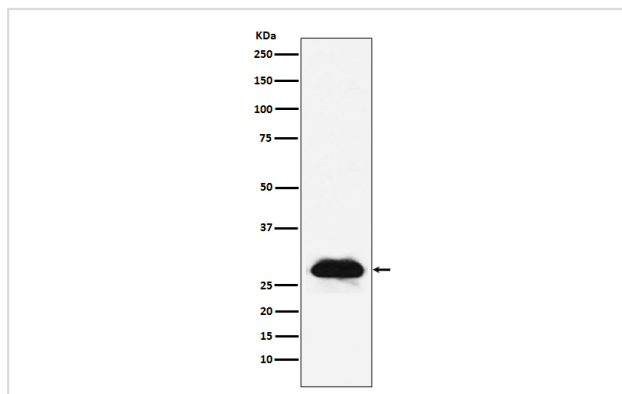
Description

Product Name	Carbonic anhydrase 2 Rabbit mAb
Host Species	Rabbit
Clonality	Monoclonal
Isotype	Rabbit IgG
Purification	Affinity-chromatography
Applications	WB IHC
Species Reactivity	Human Mouse Rat
Specificity	Carbonic anhydrase 2 Antibody detects endogenous levels of total Carbonic anhydrase 2
Immunogen Description	A synthesized peptide derived from human Carbonic anhydrase 2
Other Names	Carbonic anhydrase 2; Carbonate dehydratase II; Carbonic anhydrase C; CAC; Carbonic anhydrase II; CA-II; CA2;
Accession No.	Uniprot:P00918
Uniprot	P00918
Calculated MW	29kDa
Formulation	Rabbit IgG in phosphate buffered saline , pH 7.4, 150mM NaCl, 0.02% sodium azide and 50% glycerol.
Storage	Store at +4°C short term. Store at -20°C long term. Avoid freeze / thaw cycle.

Application Details

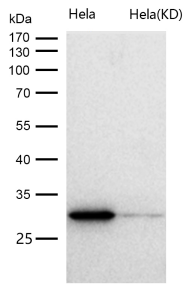
WB 1:500~1:2000 IHC 1:50~1:200

Images



Western blot analysis of Carbonic anhydrase 2 expression in A431 cell lysate.

All lanes use the Antibody at 1:1K dilution for 1 hour at room temperature.



Product Description

Essential for bone resorption and osteoclast differentiation (By similarity). Reversible hydration of carbon dioxide. Can hydrates cyanamide to urea. Involved in the regulation of fluid secretion into the anterior chamber of the eye.

Background

Essential for bone resorption and osteoclast differentiation (By similarity). Reversible hydration of carbon dioxide. Can hydrates cyanamide to urea. Involved in the regulation of fluid secretion into the anterior chamber of the eye.

Note: This product is for in vitro research use only