

Growth hormone receptor Rabbit mAb

Catalog No: #59512

Package Size: #59512-1 50ul #59512-2 100ul

Orders: order@signalwayantibody.com

Support: tech@signalwayantibody.com

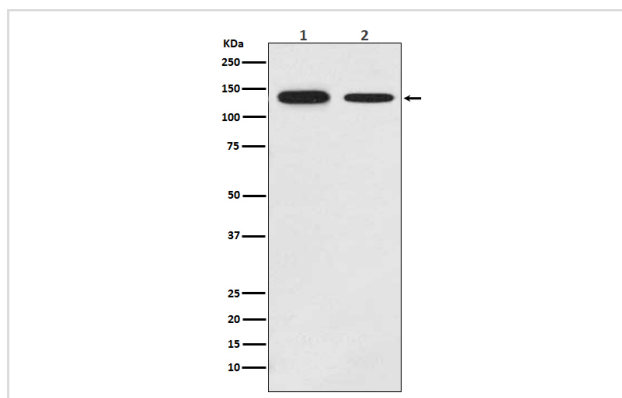
Description

Product Name	Growth hormone receptor Rabbit mAb
Host Species	Rabbit
Clonality	Monoclonal
Isotype	Rabbit IgG
Purification	Affinity-chromatography
Applications	WB ICC/IF FC
Species Reactivity	Human Mouse Rat
Specificity	Growth hormone receptor Antibody detects endogenous levels of total Growth hormone receptor
Immunogen Description	A synthesized peptide derived from human Growth hormone receptor
Other Names	GH-binding protein; GHBP; GHR; Serum binding protein; Somatotropin receptor;
Accession No.	Uniprot:P10912
Uniprot	P10912
Formulation	Rabbit IgG in phosphate buffered saline , pH 7.4, 150mM NaCl, 0.02% sodium azide and 50% glycerol.
Storage	Store at +4°C short term. Store at -20°C long term. Avoid freeze / thaw cycle.

Application Details

WB 1:500~1:2000 ICC/IF 1:50~1:200 FC 1:100

Images



Western blot analysis of Growth hormone receptor expression in (1) MCF-7 cell lysate; (2) Mouse brain lysate.

Product Description

Receptor for pituitary gland growth hormone involved in regulating postnatal body growth. On ligand binding, couples to the JAK2/STAT5 pathway.

The soluble form (GHBP) acts as a reservoir of growth hormone in plasma and may be a modulator/inhibitor of GH signaling.

Isoform 2 up-regulates the production of GHBP and acts as a negative inhibitor of GH signaling.

Background

Receptor for pituitary gland growth hormone involved in regulating postnatal body growth. On ligand binding, couples to the JAK2/STAT5 pathway. The soluble form (GHBP) acts as a reservoir of growth hormone in plasma and may be a modulator/inhibitor of GH signaling. Isoform 2 up-regulates the production of GHBP and acts as a negative inhibitor of GH signaling.

Note: This product is for in vitro research use only