

ROCK2 Rabbit mAb

Catalog No: #59513

Package Size: #59513-1 50ul #59513-2 100ul

Orders: order@signalwayantibody.com

Support: tech@signalwayantibody.com

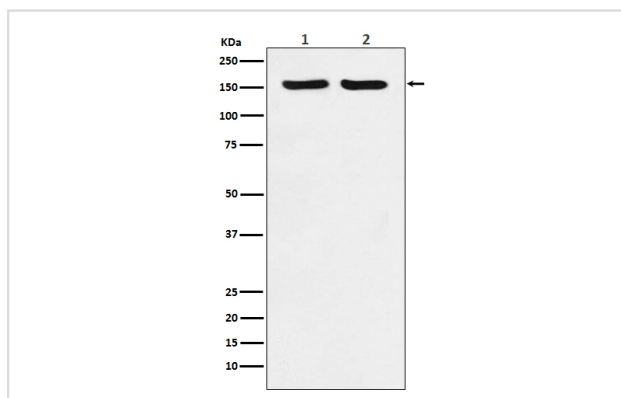
Description

Product Name	ROCK2 Rabbit mAb
Host Species	Rabbit
Clonality	Monoclonal
Isotype	Rabbit IgG
Purification	Affinity-chromatography
Applications	WB ICC/IF
Species Reactivity	Human Mouse Rat
Specificity	ROCK2 Antibody detects endogenous levels of total ROCK2
Immunogen Description	A synthesized peptide derived from human ROCK2
Other Names	p164 ROCK 2; Rho kinase 2; ROCK 2; Rock II; Rock2m; ROK alpha; ROKalpha;
Accession No.	Uniprot:O75116
Uniprot	O75116
Calculated MW	161kDa
Formulation	Rabbit IgG in phosphate buffered saline , pH 7.4, 150mM NaCl, 0.02% sodium azide and 50% glycerol.
Storage	Store at +4°C short term. Store at -20°C long term. Avoid freeze / thaw cycle.

Application Details

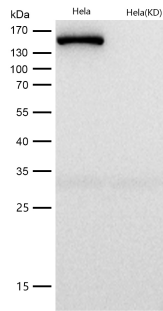
WB 1:1000~1:5000 ICC/IF 1:50~1:200

Images



Western blot analysis of ROCK2 expression in (1) HeLa cell lysate; (2) RAW264.7 cell lysate.

All lanes use the Antibody at 1:2K dilution for 1 hour at room temperature.



Product Description

Regulates the assembly of the actin cytoskeleton. Promotes formation of stress fibers and of focal adhesion complexes. Plays a role in smooth muscle contraction.

Background

Regulates the assembly of the actin cytoskeleton. Promotes formation of stress fibers and of focal adhesion complexes. Plays a role in smooth muscle contraction.

Note: This product is for in vitro research use only