

CENPE Rabbit mAb

Catalog No: #59514

Package Size: #59514-1 50ul #59514-2 100ul

Orders: order@signalwayantibody.com

Support: tech@signalwayantibody.com

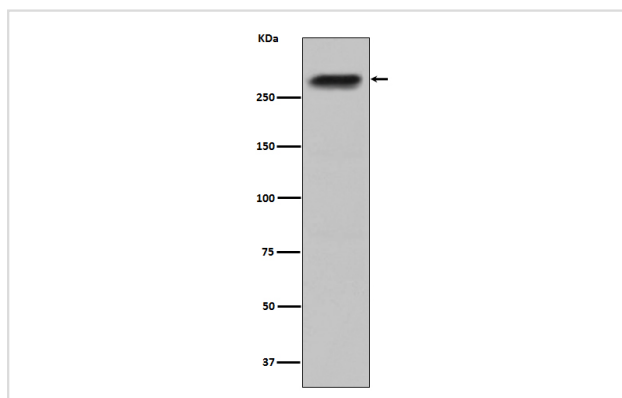
Description

Product Name	CENPE Rabbit mAb
Host Species	Rabbit
Clonality	Monoclonal
Isotype	Rabbit IgG
Purification	Affinity-chromatography
Applications	WB
Species Reactivity	Human
Specificity	CENPE Antibody detects endogenous levels of total CENPE
Immunogen Description	A synthesized peptide derived from human CENPE
Other Names	CENP E; Centromere associated protein E; Centromere protein E 312kDa; KIF10; Kinesin family member 10; Kinesin related protein; PPP1R61;
Accession No.	Uniprot:Q02224
Uniprot	Q02224
Formulation	Rabbit IgG in phosphate buffered saline , pH 7.4, 150mM NaCl, 0.02% sodium azide and 50% glycerol.
Storage	Store at +4°C short term. Store at -20°C long term. Avoid freeze / thaw cycle.

Application Details

WB 1:500~1:2000

Images



Western blot analysis of CENPE expression in HepG2 cell lysate.

Product Description

CENPE is a 250-300 kDa human centromere-associated kinesin-like motor protein that accumulates in G2 phase.

Background

CENPE is a 250-300 kDa human centromere-associated kinesin-like motor protein that accumulates in G2 phase.

Note: This product is for in vitro research use only