

Calpain 2 Rabbit mAb

Catalog No: #59517

Package Size: #59517-1 50ul #59517-2 100ul

Orders: order@signalwayantibody.comSupport: tech@signalwayantibody.com

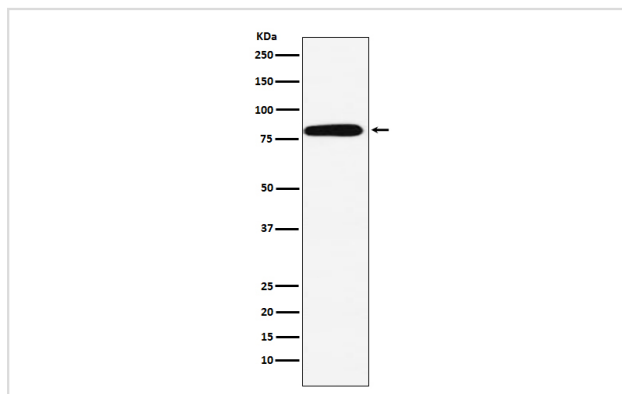
Description

Product Name	Calpain 2 Rabbit mAb
Host Species	Rabbit
Clonality	Monoclonal
Isotype	Rabbit IgG
Purification	Affinity-chromatography
Applications	WB
Species Reactivity	Human Mouse Rat
Specificity	Calpain 2 Antibody detects endogenous levels of total Calpain 2
Immunogen Description	A synthesized peptide derived from human Calpain 2
Other Names	CALP80; Calpain M type; Calpain-2 large subunit; Calpain2; CANP2; CANPL2; CANPml; Capa2; CAPN2; M calpain; mCANP; Millimolar calpain;
Accession No.	Uniprot:P17655
Uniprot	P17655
Calculated MW	80kDa
Formulation	Rabbit IgG in phosphate buffered saline , pH 7.4, 150mM NaCl, 0.02% sodium azide and 50% glycerol.
Storage	Store at +4°C short term. Store at -20°C long term. Avoid freeze / thaw cycle.

Application Details

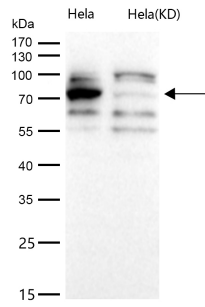
WB 1:500~1:2000

Images



Western blot analysis of Calpain 2 expression in A431 cell lysate.

All lanes use the Antibody at 1:1K dilution for 1 hour at room temperature.



Product Description

Calcium-regulated non-lysosomal thiol-protease which catalyze limited proteolysis of substrates involved in cytoskeletal remodeling and signal transduction.

Background

Calcium-regulated non-lysosomal thiol-protease which catalyze limited proteolysis of substrates involved in cytoskeletal remodeling and signal transduction.

Note: This product is for in vitro research use only