

## IDH2 Rabbit mAb

Catalog No: #59521

Package Size: #59521-1 50ul #59521-2 100ul

Orders: order@signalwayantibody.com

Support: tech@signalwayantibody.com

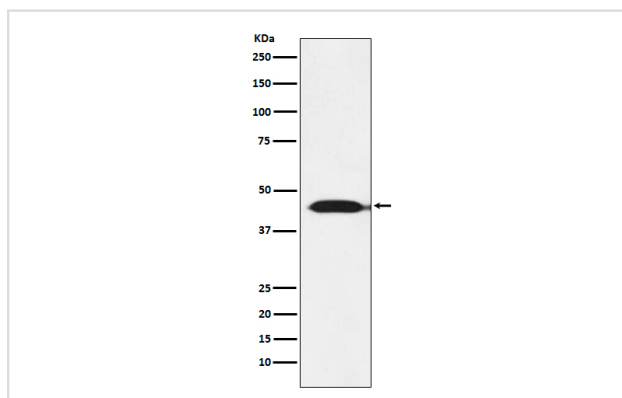
## Description

Product Name	IDH2 Rabbit mAb
Host Species	Rabbit
Clonality	Monoclonal
Isotype	Rabbit IgG
Purification	Affinity-chromatography
Applications	WB IHC FC
Species Reactivity	Human Mouse Rat
Specificity	IDH2 Antibody detects endogenous levels of total IDH2
Immunogen Description	A synthesized peptide derived from human IDH2
Other Names	D2HGA2; ICD-M; IDH; IDH2; IDHM; IDP; IDPM; mNADP-IDH; NADP(+)-specific ICDH; Oxalosuccinate decarboxylase;
Accession No.	Uniprot:P48735
Uniprot	P48735
Formulation	Rabbit IgG in phosphate buffered saline , pH 7.4, 150mM NaCl, 0.02% sodium azide and 50% glycerol.
Storage	Store at +4°C short term. Store at -20°C long term. Avoid freeze / thaw cycle.

## Application Details

WB 1:500~1:2000 IHC 1:50~1:200 FC 1:100

## Images



Western blot analysis of IDH2 expression in MOLT4 cell lysate.

## Product Description

Plays a role in intermediary metabolism and energy production. It may tightly associate or interact with the pyruvate dehydrogenase complex.

## Background

---

Plays a role in intermediary metabolism and energy production. It may tightly associate or interact with the pyruvate dehydrogenase complex.

---

Note: This product is for in vitro research use only