

## SNAP23 Rabbit mAb

Catalog No: #59523

Package Size: #59523-1 50ul #59523-2 100ul

Orders: order@signalwayantibody.com

Support: tech@signalwayantibody.com

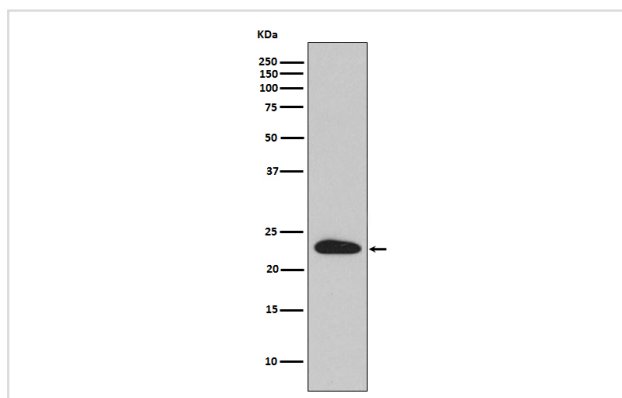
## Description

Product Name	SNAP23 Rabbit mAb
Host Species	Rabbit
Clonality	Monoclonal
Isotype	Rabbit IgG
Purification	Affinity-chromatography
Applications	WB
Species Reactivity	Human Mouse Rat
Specificity	SNAP23 Antibody detects endogenous levels of total SNAP23
Immunogen Description	A synthesized peptide derived from human SNAP23
Other Names	HsT17016; LS-B8340; SNAP23A; SNAP23B; Synaptosomal associated protein 23; Vesicle membrane fusion protein SNAP23;
Accession No.	Uniprot:O00161
Uniprot	O00161
Formulation	Rabbit IgG in phosphate buffered saline , pH 7.4, 150mM NaCl, 0.02% sodium azide and 50% glycerol.
Storage	Store at +4°C short term. Store at -20°C long term. Avoid freeze / thaw cycle.

## Application Details

WB 1:500~1:2000

## Images



Western blot analysis of SNAP23 expression in HeLa cell lysate.

## Product Description

Essential component of the high affinity receptor for the general membrane fusion machinery and an important regulator of transport vesicle docking and fusion.

## Background

---

Essential component of the high affinity receptor for the general membrane fusion machinery and an important regulator of transport vesicle docking and fusion.

---

Note: This product is for in vitro research use only