

Zic1 Rabbit mAb

Catalog No: #59526

Package Size: #59526-1 50ul #59526-2 100ul

Orders: order@signalwayantibody.comSupport: tech@signalwayantibody.com

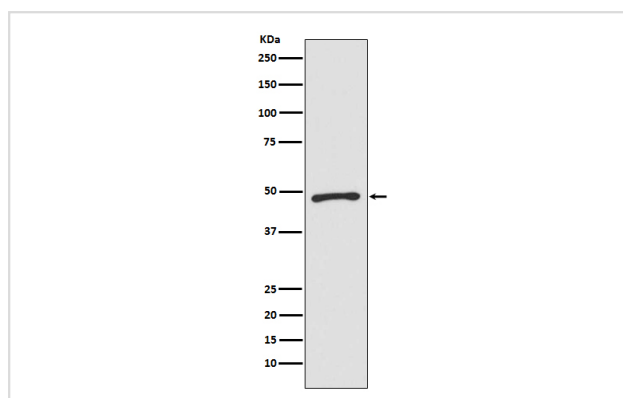
Description

Product Name	Zic1 Rabbit mAb
Host Species	Rabbit
Clonality	Monoclonal
Isotype	Rabbit IgG
Purification	Affinity-chromatography
Applications	WB ICC/IF FC
Species Reactivity	Human Mouse Rat
Specificity	Zic1 Antibody detects endogenous levels of total Zic1
Immunogen Description	A synthesized peptide derived from human Zic1
Other Names	ZIC; Zic protein member 1; Zinc finger protein 201; Zinc finger protein ZIC1; ZNF201;
Accession No.	Uniprot:Q15915
Uniprot	Q15915
Formulation	Rabbit IgG in phosphate buffered saline , pH 7.4, 150mM NaCl, 0.02% sodium azide and 50% glycerol.
Storage	Store at +4°C short term. Store at -20°C long term. Avoid freeze / thaw cycle.

Application Details

WB 1:500~1:2000 ICC/IF 1:50~1:200 FC 1:120

Images



Western blot analysis of Zic1 expression in SW480 cell lysate.

Product Description

Acts as a transcriptional activator. Involved in neurogenesis. Plays important roles in the early stage of organogenesis of the CNS, as well as during dorsal spinal cord development and maturation of the cerebellum. Involved in the spatial distribution of mossy fiber (MF) neurons within the pontine gray nucleus (PGN). Plays a role in the regulation of MF axon pathway choice. Promotes MF migration towards ipsilaterally-located cerebellar territories.

Background

Acts as a transcriptional activator. Involved in neurogenesis. Plays important roles in the early stage of organogenesis of the CNS, as well as during dorsal spinal cord development and maturation of the cerebellum. Involved in the spatial distribution of mossy fiber (MF) neurons within the pontine gray nucleus (PGN). Plays a role in the regulation of MF axon pathway choice. Promotes MF migration towards ipsilaterally-located cerebellar territories.

Note: This product is for in vitro research use only