

GC1q R Rabbit mAb

Catalog No: #59527

Package Size: #59527-1 50ul #59527-2 100ul

Orders: order@signalwayantibody.com

Support: tech@signalwayantibody.com

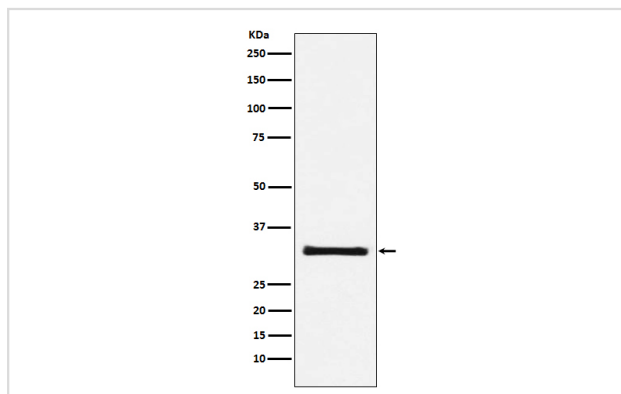
Description

Product Name	GC1q R Rabbit mAb
Host Species	Rabbit
Clonality	Monoclonal
Isotype	Rabbit IgG
Purification	Affinity-chromatography
Applications	WB IHC
Species Reactivity	Human Mouse Rat
Specificity	GC1q R Antibody detects endogenous levels of total GC1q R
Immunogen Description	A synthesized peptide derived from human GC1q R
Other Names	ASF/SF2 associated protein p32; C1q globular domain binding protein; C1qBP; GC1Q R; GC1QBP; GC1QR; p32 splicing factor; SF2p32;
Accession No.	Uniprot:Q07021
Uniprot	Store at +4°C short term. Store at -20°C long term. Avoid freeze / thaw cycle.
Calculated MW	31kDa
Formulation	Rabbit IgG in phosphate buffered saline , pH 7.4, 150mM NaCl, 0.02% sodium azide and 50% glycerol.
Storage	Store at +4°C short term. Store at -20°C long term. Avoid freeze / thaw cycle.

Application Details

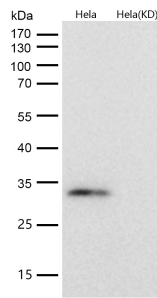
WB 1:500~1:2000 IHC 1:50~1:200

Images



Western blot analysis of GC1q R expression in HeLa cell lysate.

All lanes use the Antibody at 1:1K dilution for 1 hour at room temperature.



Product Description

Binds to the globular heads" of C1Q thus inhibiting C1 activation.,,,,,,1,,1,1,1,0,1,1701055481,0,0,0,0,0,0,1701055481,0,-1,-1,0,0
324195,57,59528,CXCR3 Rabbit mAb,0,10,CXCR3-Rabbit-mAb,CXCR3 Rabbit
mAb,,0,50ul,249,249,0,0,0,58,ABWAY,CY7013,CY7013,0,0,0,Yes,Rabbit Monoclonal Antibody,"Receptor for CXCL9, CXCL10 and CXCL11 and
mediates the proliferation of human mesangial cells (HMC). Isoform 2 is a receptor for CXCL4 and also mediates the inhibitory activities of CXCL9,
CXCL10 and CXCL11 on the growth of human microvascular endothelial cells (HMVEC). May play a role in angiogenesis.

Background

Binds to the globular heads" of C1Q thus inhibiting C1 activation.,,Q07021,Null,http://www.uniprot.org/uniprot/Q07021,Null
324195,324195,59528,Null,CXCR3 Rabbit mAb,Rabbit,Monoclonal,Null,Rabbit IgG,Affinity-chromatography,WB ICC/IF IP,WB 1:500~1:2000 ICC/IF
1:50~1:200 IP 1:50,Human,CXCR3 Antibody detects endogenous levels of total CXCR3.,,,,,C-X-C chemokine receptor type 3; CXCR-3; CXCR-3;
CKR-L2; G protein-coupled receptor 9; Interferon-inducible protein 10 receptor; IP-10 receptor; CD183; GPR9;
CXCR3;,Uniprot:P49682,,Null,Null,41kDa,Null,Null,Null,Null,Null,Null,Null,A synthesized peptide derived from human
CXCR3,Null,Null,Null,Null,Null,Null,Null,Null,Null,Null,Null,Null,Null,"Rabbit IgG in phosphate buffered saline , pH 7.4, 150mM NaCl, 0.02% sodium azide and
50% glycerol.

Note: This product is for in vitro research use only