

Reelin Rabbit mAb

Catalog No: #59529

Package Size: #59529-1 50ul #59529-2 100ul

Orders: order@signalwayantibody.com

Support: tech@signalwayantibody.com

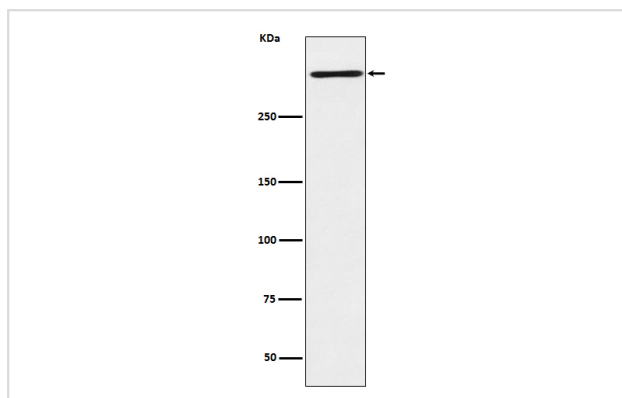
Description

| | |
|-----------------------|--|
| Product Name | Reelin Rabbit mAb |
| Host Species | Rabbit |
| Clonality | Monoclonal |
| Isotype | Rabbit IgG |
| Purification | Affinity-chromatography |
| Applications | WB |
| Species Reactivity | Human Rat |
| Specificity | Reelin Antibody detects endogenous levels of total Reelin |
| Immunogen Description | A synthesized peptide derived from human Reelin |
| Other Names | LIS2; PRO1598; Reeler; Reelin; RELN; RL; |
| Accession No. | Uniprot:P78509 |
| Uniprot | P78509 |
| Formulation | Rabbit IgG in phosphate buffered saline , pH 7.4, 150mM NaCl, 0.02% sodium azide and 50% glycerol. |
| Storage | Store at +4°C short term. Store at -20°C long term. Avoid freeze / thaw cycle. |

Application Details

WB 1:500~1:2000

Images



Western blot analysis of Reelin expression in HepG2 cell lysate.

Product Description

Extracellular matrix serine protease that plays a role in layering of neurons in the cerebral cortex and cerebellum. Regulates microtubule function in neurons and neuronal migration. Affects migration of sympathetic preganglionic neurons in the spinal cord, where it seems to act as a barrier to neuronal migration.

Background

Extracellular matrix serine protease that plays a role in layering of neurons in the cerebral cortex and cerebellum. Regulates microtubule function in neurons and neuronal migration. Affects migration of sympathetic preganglionic neurons in the spinal cord, where it seems to act as a barrier to neuronal migration.

Note: This product is for in vitro research use only