

Dynamin 2 Rabbit mAb

Catalog No: #59532

Package Size: #59532-1 50ul #59532-2 100ul

Orders: order@signalwayantibody.com

Support: tech@signalwayantibody.com

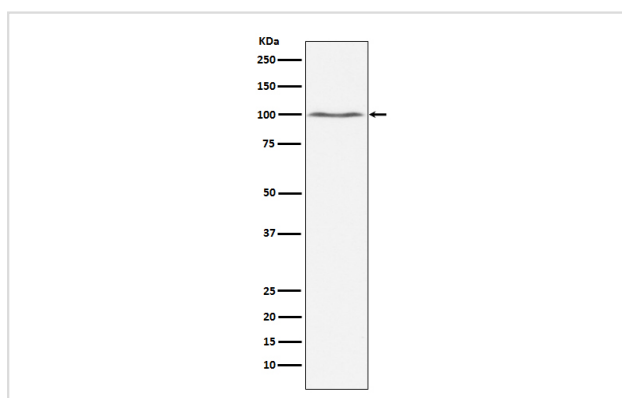
Description

Product Name	Dynamin 2 Rabbit mAb
Host Species	Rabbit
Clonality	Monoclonal
Isotype	Rabbit IgG
Purification	Affinity-chromatography
Applications	WB IHC ICC/IF FC
Species Reactivity	Human Mouse Rat
Specificity	Dynamin 2 Antibody detects endogenous levels of total Dynamin 2
Immunogen Description	A synthesized peptide derived from human Dynamin 2
Other Names	CMT2M; CMTDI1; CMTDIB; DI CMTB; Dnm2; DYN II; DYN2; Dynamin II; Dynamin2; DynaminII; DYNII;
Accession No.	Uniprot:P50570
Uniprot	P50570
Calculated MW	98kDa
Formulation	Rabbit IgG in phosphate buffered saline , pH 7.4, 150mM NaCl, 0.02% sodium azide and 50% glycerol.
Storage	Store at +4°C short term. Store at -20°C long term. Avoid freeze / thaw cycle.

Application Details

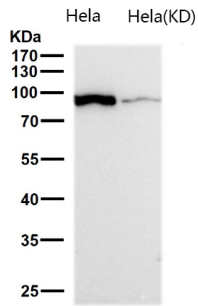
WB 1:500~1:1000 IHC 1:50~1:200 ICC/IF 1:50~1:200 FC 1:100

Images



Western blot analysis of Dynamin 2 expression in Jurkat cell lysate.

All lanes use the Antibody at 1:1K dilution for 1 hour at room temperature.



Product Description

Microtubule-associated force-producing protein involved in producing microtubule bundles and able to bind and hydrolyze GTP. Most probably involved in vesicular trafficking processes, in particular endocytosis.

Background

Microtubule-associated force-producing protein involved in producing microtubule bundles and able to bind and hydrolyze GTP. Most probably involved in vesicular trafficking processes, in particular endocytosis.

Note: This product is for in vitro research use only