

## Protein C Rabbit mAb

Catalog No: #59533

Package Size: #59533-1 50ul #59533-2 100ul

Orders: [order@signalwayantibody.com](mailto:order@signalwayantibody.com)Support: [tech@signalwayantibody.com](mailto:tech@signalwayantibody.com)

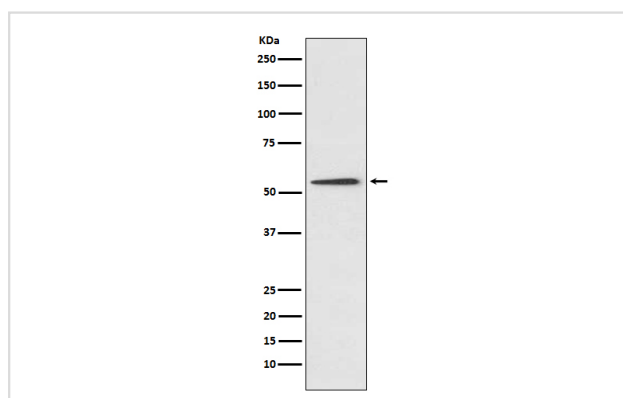
## Description

Product Name	Protein C Rabbit mAb
Host Species	Rabbit
Clonality	Monoclonal
Isotype	Rabbit IgG
Purification	Affinity-chromatography
Applications	WB
Species Reactivity	Human
Specificity	Protein C Antibody detects endogenous levels of total Protein C
Immunogen Description	A synthesized peptide derived from human Protein C
Other Names	Activation peptide; Anticoagulant protein C; APC; Autoprothrombin IIA; Blood coagulation factor XIV; PROC1; THPH3; THPH4; Vitamin K dependent protein C;
Accession No.	Uniprot:P04070
Uniprot	P04070
Formulation	Rabbit IgG in phosphate buffered saline , pH 7.4, 150mM NaCl, 0.02% sodium azide and 50% glycerol.
Storage	Store at +4°C short term. Store at -20°C long term. Avoid freeze / thaw cycle.

## Application Details

WB 1:500~1:2000

## Images



Western blot analysis of Protein C expression in HepG2 cell lysate.

## Product Description

Protein C is a vitamin K-dependent serine protease that regulates blood coagulation by inactivating factors Va and VIIIa in the presence of calcium ions and phospholipids (PubMed:25618265). Exerts a protective effect on the endothelial cell barrier function.

## Background

---

Protein C is a vitamin K-dependent serine protease that regulates blood coagulation by inactivating factors Va and VIIIa in the presence of calcium ions and phospholipids (PubMed:25618265). Exerts a protective effect on the endothelial cell barrier function.

---

Note: This product is for in vitro research use only