

PKC mu Rabbit mAb

Catalog No: #59534

Package Size: #59534-1 50ul #59534-2 100ul

Orders: order@signalwayantibody.com

Support: tech@signalwayantibody.com

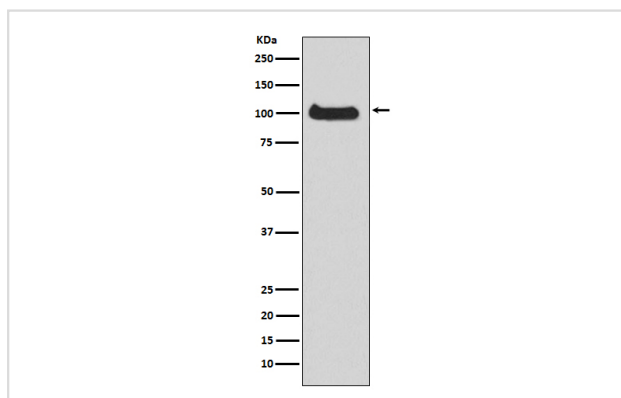
Description

Product Name	PKC mu Rabbit mAb
Host Species	Rabbit
Clonality	Monoclonal
Isotype	Rabbit IgG
Purification	Affinity-chromatography
Applications	WB
Species Reactivity	Human Mouse Rat
Specificity	PKC mu Antibody detects endogenous levels of total PKC mu
Immunogen Description	A synthesized peptide derived from human PKC mu
Other Names	nPKC D1; nPKC mu; nPKCD1; nPKCmu; PKCM; PKCmu; PKD1; PRKCM; PRKD 1; Prkd1; Protein kinase C mu; Protein kinase C mu type; Serine/threonine protein kinase D1;
Accession No.	Uniprot:Q15139
Uniprot	Q15139
Formulation	Rabbit IgG in phosphate buffered saline , pH 7.4, 150mM NaCl, 0.02% sodium azide and 50% glycerol.
Storage	Store at +4°C short term. Store at -20°C long term. Avoid freeze / thaw cycle.

Application Details

WB 1:500~1:2000

Images



Western blot analysis of PKC mu expression in HeLa cell lysate.

Product Description

Converts transient diacylglycerol (DAG) signals into prolonged physiological effects, downstream of PKC. Involved in resistance to oxidative stress through activation of NF-kappa-B.

Background

Converts transient diacylglycerol (DAG) signals into prolonged physiological effects, downstream of PKC. Involved in resistance to oxidative stress through activation of NF-kappa-B.

Note: This product is for in vitro research use only