

ApoER2 Rabbit mAb

Catalog No: #59535

Package Size: #59535-1 50ul #59535-2 100ul

Orders: order@signalwayantibody.com

Support: tech@signalwayantibody.com

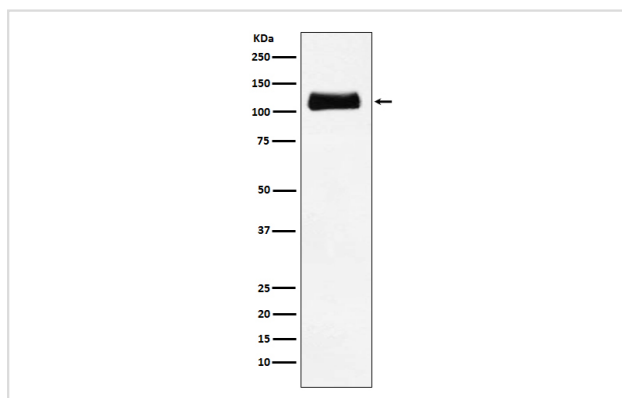
Description

Product Name	ApoER2 Rabbit mAb
Host Species	Rabbit
Clonality	Monoclonal
Isotype	Rabbit IgG
Purification	Affinity-chromatography
Applications	WB IP
Species Reactivity	Human Mouse Rat
Specificity	ApoER2 Antibody detects endogenous levels of total ApoER2
Immunogen Description	A synthesized peptide derived from human ApoER2
Other Names	APOER2; Apolipoprotein E receptor 2; LRP8;
Accession No.	Uniprot:Q14114
Uniprot	Q14114
Calculated MW	106kDa
Formulation	Rabbit IgG in phosphate buffered saline , pH 7.4, 150mM NaCl, 0.02% sodium azide and 50% glycerol.
Storage	Store at +4°C short term. Store at -20°C long term. Avoid freeze / thaw cycle.

Application Details

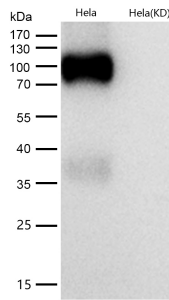
WB 1:500~1:2000 IP 1:50

Images



Western blot analysis of ApoER2 expression in C6 cell lysate.

All lanes use the Antibody at 1:1K dilution for 1 hour at room temperature.



Product Description

Cell surface receptor for Reelin (RELN) and apolipoprotein E (apoE)-containing ligands. LRP8 participates in transmitting the extracellular Reelin signal to intracellular signaling processes, by binding to DAB1 on its cytoplasmic tail.

Background

Cell surface receptor for Reelin (RELN) and apolipoprotein E (apoE)-containing ligands. LRP8 participates in transmitting the extracellular Reelin signal to intracellular signaling processes, by binding to DAB1 on its cytoplasmic tail.

Note: This product is for in vitro research use only