

Dynein intermediate chain 1 Rabbit mAb

Catalog No: #59540

Package Size: #59540-1 50ul #59540-2 100ul

Orders: order@signalwayantibody.com

Support: tech@signalwayantibody.com

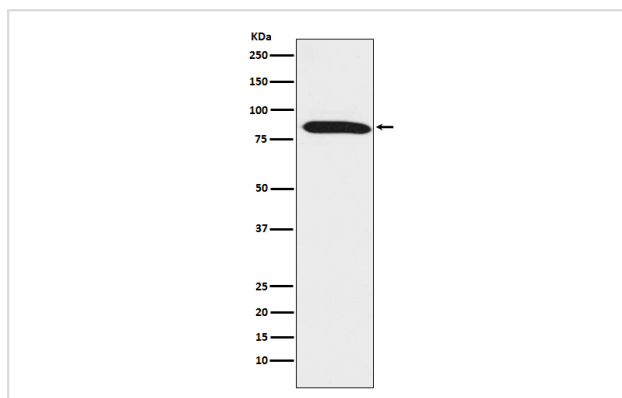
Description

Product Name	Dynein intermediate chain 1 Rabbit mAb
Host Species	Rabbit
Clonality	Monoclonal
Isotype	Rabbit IgG
Purification	Affinity-chromatography
Applications	WB
Species Reactivity	Human Mouse Rat
Specificity	Dynein intermediate chain 1 Antibody detects endogenous levels of total Dynein intermediate chain 1
Immunogen Description	A synthesized peptide derived from human Dynein intermediate chain 1
Other Names	DNAI1; ICS; Immotile cilia syndrome 1; ICS1; CILD1; PCD;
Accession No.	Uniprot:Q9UI46
Uniprot	Q9UI46
Formulation	Rabbit IgG in phosphate buffered saline , pH 7.4, 150mM NaCl, 0.02% sodium azide and 50% glycerol.
Storage	Store at +4°C short term. Store at -20°C long term. Avoid freeze / thaw cycle.

Application Details

WB 1:500~1:2000

Images



Western blot analysis of Dynein intermediate chain 1 expression in mouse testis lysate.

Product Description

Part of the dynein complex of respiratory cilia.

Background

Part of the dynein complex of respiratory cilia.

Note: This product is for in vitro research use only