

## HP1 gamma Rabbit mAb

Catalog No: #59541

Package Size: #59541-1 50ul #59541-2 100ul

Orders: order@signalwayantibody.com

Support: tech@signalwayantibody.com

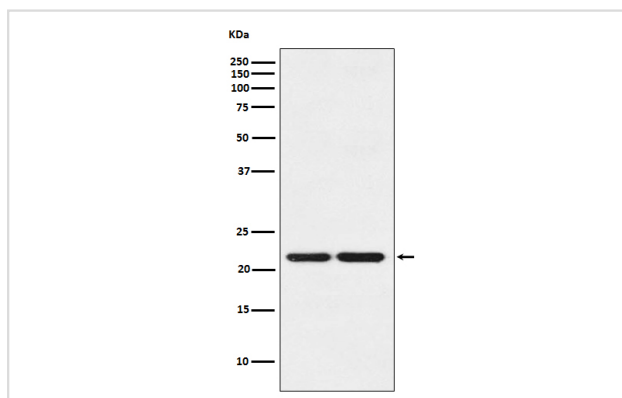
## Description

Product Name	HP1 gamma Rabbit mAb
Host Species	Rabbit
Clonality	Monoclonal
Isotype	Rabbit IgG
Purification	Affinity-chromatography
Applications	WB IHC IP FC
Species Reactivity	Human Mouse Rat
Specificity	HP1 gamma Antibody detects endogenous levels of total HP1 gamma
Immunogen Description	A synthesized peptide derived from human HP1 gamma
Other Names	Chromobox protein homolog 3; HECH; Heterochromatin protein 1 homolog gamma; HP1 gamma; Modifier 2 protein; CBX3; HP1 gamma;
Accession No.	Uniprot:Q13185
Uniprot	Q13185
Formulation	Rabbit IgG in phosphate buffered saline , pH 7.4, 150mM NaCl, 0.02% sodium azide and 50% glycerol.
Storage	Store at +4°C short term. Store at -20°C long term. Avoid freeze / thaw cycle.

## Application Details

WB 1:500~1:2000 IHC 1:50~1:200 IP 1:50 FC 1:100

## Images



Western blot analysis of HP1 gamma expression in (1) HeLa cell lysate; (2) NIH/3T3 cell lysate.

## Product Description

Recognizes and binds histone H3 tails methylated at 'Lys-9', leading to epigenetic repression. May contribute to the association of the heterochromatin with the inner nuclear membrane through its interaction with lamin B receptor (LBR). Involved in the formation of functional kinetochores through interaction with MIS12 complex proteins.

## Background

---

Recognizes and binds histone H3 tails methylated at 'Lys-9', leading to epigenetic repression. May contribute to the association of the heterochromatin with the inner nuclear membrane through its interaction with lamin B receptor (LBR). Involved in the formation of functional kinetochore through interaction with MIS12 complex proteins.

---

Note: This product is for in vitro research use only