

Atg7(Apg7) Rabbit mAb

Catalog No: #59549

Package Size: #59549-1 50ul #59549-2 100ul

Orders: order@signalwayantibody.com

Support: tech@signalwayantibody.com

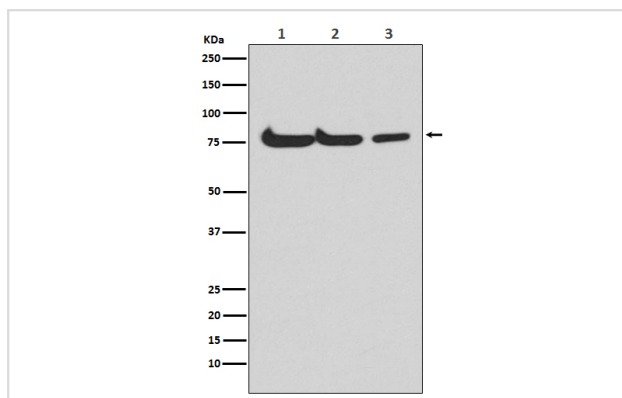
Description

Product Name	Atg7(Apg7) Rabbit mAb
Host Species	Rabbit
Clonality	Monoclonal
Isotype	Rabbit IgG
Purification	Affinity-chromatography
Applications	WB ICC/IF
Species Reactivity	Human Mouse Rat
Specificity	Atg7(Apg7) Antibody detects endogenous levels of total Atg7(Apg7)
Immunogen Description	A synthesized peptide derived from human Atg7(Apg7)
Other Names	hAGP7; Ubiquitin-activating enzyme E1-like protein; APG7L;
Accession No.	Uniprot:O95352
Uniprot	O95352
Formulation	Rabbit IgG in phosphate buffered saline , pH 7.4, 150mM NaCl, 0.02% sodium azide and 50% glycerol.
Storage	Store at +4°C short term. Store at -20°C long term. Avoid freeze / thaw cycle.

Application Details

WB 1:1000~1:5000 ICC/IF 1:50~1:200

Images



Western blot analysis of Atg7(Apg7) expression in (1) HepG2 cell lysate; (2) Mouse spleen lysate; (3) Rat kidney lysate.

Product Description

Formation of the autophagosome involves a ubiquitin-like conjugation system in which Atg12 is covalently bound to Atg5 and targeted to autophagosome vesicles. This conjugation reaction is mediated by the ubiquitin E1-like enzyme Atg7 and the E2-like enzyme Atg10.

Background

Formation of the autophagosome involves a ubiquitin-like conjugation system in which Atg12 is covalently bound to Atg5 and targeted to autophagosome vesicles. This conjugation reaction is mediated by the ubiquitin E1-like enzyme Atg7 and the E2-like enzyme Atg10.

Note: This product is for in vitro research use only