

MSH2 Rabbit mAb

Catalog No: #59560

Package Size: #59560-1 50ul #59560-2 100ul

Orders: order@signalwayantibody.com

Support: tech@signalwayantibody.com

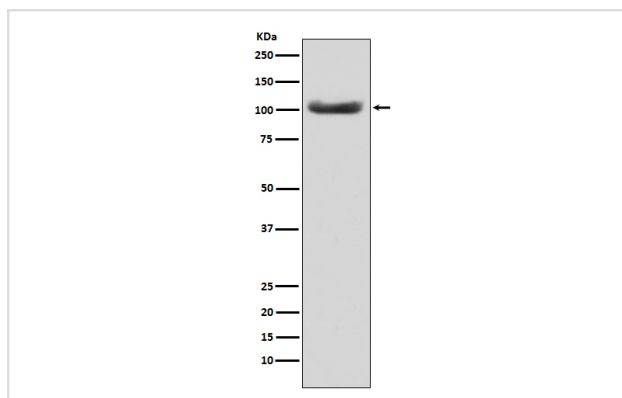
Description

Product Name	MSH2 Rabbit mAb
Host Species	Rabbit
Clonality	Monoclonal
Isotype	Rabbit IgG
Purification	Affinity-chromatography
Applications	WB FC
Species Reactivity	Human
Specificity	MSH2 Antibody detects endogenous levels of total MSH2
Immunogen Description	A synthesized peptide derived from human MSH2
Other Names	DNA mismatch repair protein Msh2; hMSH2; MutS protein homolog 2; MSH2; COCA1; LCFS2;
Accession No.	Uniprot:P43246
Uniprot	P43246
Formulation	Rabbit IgG in phosphate buffered saline , pH 7.4, 150mM NaCl, 0.02% sodium azide and 50% glycerol.
Storage	Store at +4°C short term. Store at -20°C long term. Avoid freeze / thaw cycle.

Application Details

WB 1:500~1:2000 FC 1:50

Images



Western blot analysis of MSH2 expression in HeLa cell lysate.

Product Description

MSH2 (MutS homologue 2) forms the hMutS- α dimer with MSH6 and is an essential component of the mismatch repair process. hMutS- α is part of the BRCA1-associated surveillance complex (BASC), a complex that also contains BRCA1, MLH1, ATM, BLM, PMS2 proteins and the Rad50-Mre11-NBS1 complex.

Background

MSH2 (MutS homologue 2) forms the hMutS- α dimer with MSH6 and is an essential component of the mismatch repair process. hMutS- α is part of the BRCA1-associated surveillance complex (BASC), a complex that also contains BRCA1, MLH1, ATM, BLM, PMS2 proteins and the Rad50-Mre11-NBS1 complex.

Note: This product is for in vitro research use only