

CD1a Rabbit mAb

Catalog No: #59561

Package Size: #59561-1 50ul #59561-2 100ul

Orders: order@signalwayantibody.comSupport: tech@signalwayantibody.com

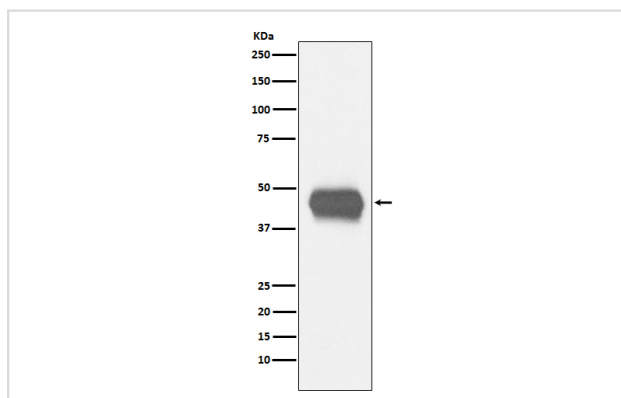
Description

Product Name	CD1a Rabbit mAb
Host Species	Rabbit
Clonality	Monoclonal
Isotype	Rabbit IgG
Purification	Affinity-chromatography
Applications	WB IHC
Species Reactivity	Human
Specificity	CD1a Antibody detects endogenous levels of total CD1a
Immunogen Description	A synthesized peptide derived from human CD1a
Other Names	CD 1a; CD1; CD1a; epidermal dendritic cell marker CD1a; FCB6; HTA1; hTa1 thymocyte antigen; R4; T-cell surface antigen T6/Leu-6; T6;
Accession No.	Uniprot:P06126
Uniprot	P06126
Formulation	Rabbit IgG in phosphate buffered saline , pH 7.4, 150mM NaCl, 0.02% sodium azide and 50% glycerol.
Storage	Store at +4°C short term. Store at -20°C long term. Avoid freeze / thaw cycle.

Application Details

WB 1:500~1:2000 IHC 1:50~1:200

Images



Western blot analysis of CD1a expression in human fetal thymus lysate.

Product Description

Antigen-presenting protein that binds self and non-self lipid and glycolipid antigens and presents them to T-cell receptors on natural killer T-cells.

Background

Antigen-presenting protein that binds self and non-self lipid and glycolipid antigens and presents them to T-cell receptors on natural killer T-cells.

Note: This product is for in vitro research use only