

## Fascin Rabbit mAb

Catalog No: #59563

Package Size: #59563-1 50ul #59563-2 100ul

Orders: order@signalwayantibody.com

Support: tech@signalwayantibody.com

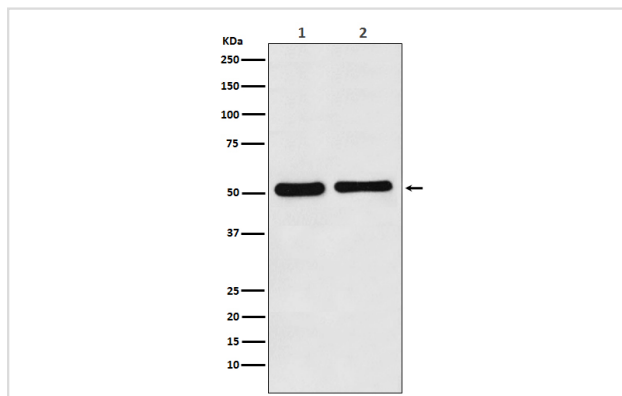
## Description

Product Name	Fascin Rabbit mAb
Host Species	Rabbit
Clonality	Monoclonal
Isotype	Rabbit IgG
Purification	Affinity-chromatography
Applications	WB IHC ICC/IF IP FC
Species Reactivity	Human Mouse Rat
Specificity	Fascin Antibody detects endogenous levels of total Fascin
Immunogen Description	A synthesized peptide derived from human Fascin
Other Names	55 kDa actin bundling protein; Actin bundling protein; FAN1; Fascin 1; Fascin; Singed (Drosophila) like (sea urchin fascin homolog like); Fascin homolog 1; Fascin;
Accession No.	Uniprot:Q16658
Uniprot	Q16658
Formulation	Rabbit IgG in phosphate buffered saline , pH 7.4, 150mM NaCl, 0.02% sodium azide and 50% glycerol.
Storage	Store at +4°C short term. Store at -20°C long term. Avoid freeze / thaw cycle.

## Application Details

WB 1:1000~1:5000 IHC 1:50~1:200 ICC/IF 1:50~1:200 IP 1:50 FC 1:100

## Images



Western blot analysis of Fascin expression in (1) K562 cell lysate; (2) Mouse kidney lysate.

## Product Description

Promotes cross-linkage of parallel actin filaments during the formation of cell protrusions (lamellipodia and filopodia), and therefore plays an important role in regulating cell migration. It has been reported that fascin may also regulate filopodia formation by a mechanism independent of its actin-bundling functions, though less is known about this mechanism of action.

## Background

---

Promotes cross-linkage of parallel actin filaments during the formation of cell protrusions (lamellipodia and filopodia), and therefore plays an important role in regulating cell migration. It has been reported that fascin may also regulate filopodia formation by a mechanism independent of its actin-bundling functions, though less is known about this mechanism of action.

---

Note: This product is for in vitro research use only