

## Hemopexin Rabbit mAb

Catalog No: #59575

Package Size: #59575-1 50ul #59575-2 100ul

Orders: order@signalwayantibody.com

Support: tech@signalwayantibody.com

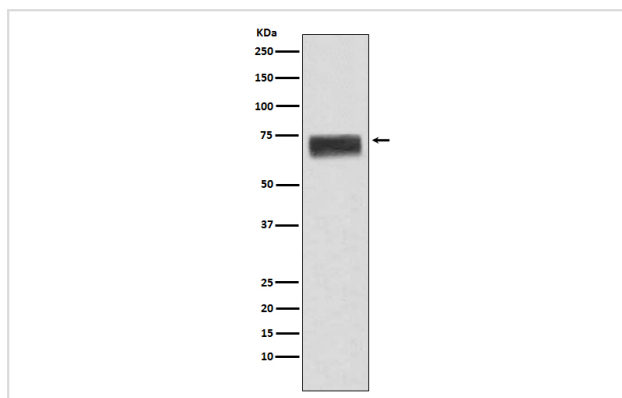
## Description

Product Name	Hemopexin Rabbit mAb
Host Species	Rabbit
Clonality	Monoclonal
Isotype	Rabbit IgG
Purification	Affinity-chromatography
Applications	WB IHC ICC/IF IP
Species Reactivity	Human
Specificity	Hemopexin Antibody detects endogenous levels of total Hemopexin
Immunogen Description	A synthesized peptide derived from human Hemopexin
Other Names	Beta 1B glycoprotein; HEMO; Hemopexin; Hpx;
Accession No.	Uniprot:P02790
Uniprot	P02790
Formulation	Rabbit IgG in phosphate buffered saline , pH 7.4, 150mM NaCl, 0.02% sodium azide and 50% glycerol.
Storage	Store at +4°C short term. Store at -20°C long term. Avoid freeze / thaw cycle.

## Application Details

WB 1:1000~1:5000 IHC 1:50~1:200 ICC/IF 1:50~1:200 IP 1:50

## Images



Western blot analysis of Hemopexin expression in human fetal liver lysate.

## Product Description

Binds heme and transports it to the liver for breakdown and iron recovery, after which the free hemopexin returns to the circulation.

## Background

Binds heme and transports it to the liver for breakdown and iron recovery, after which the free hemopexin returns to the circulation.

---

Note: This product is for in vitro research use only