

## Ephrin B2 Rabbit mAb

Catalog No: #59580

Package Size: #59580-1 50ul #59580-2 100ul

Orders: order@signalwayantibody.com

Support: tech@signalwayantibody.com

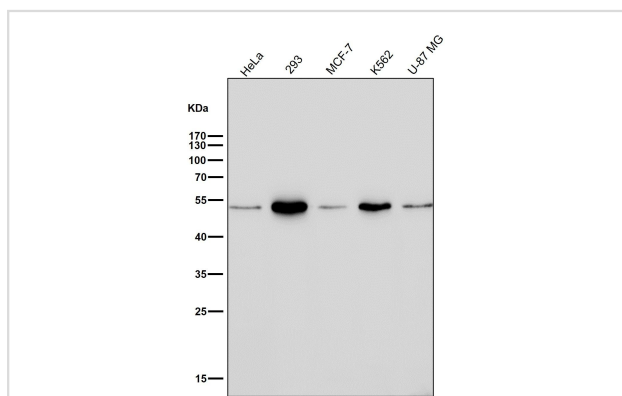
## Description

Product Name	Ephrin B2 Rabbit mAb
Host Species	Rabbit
Clonality	Monoclonal
Clone No.	31D11
Isotype	Rabbit IgG
Purification	Affinity-chromatography
Applications	WB ICC/IF
Species Reactivity	Human Mouse Rat
Specificity	Ephrin B2 Antibody detects endogenous levels of total Ephrin B2
Immunogen Description	A synthesized peptide derived from human Ephrin B2
Target Name	EFNB2
Other Names	Efnb2; ephrin B2; EPLG5; Htk L; HTK ligand; HTK-L; HTKL; LERK5;
Accession No.	Uniprot:P52799
Uniprot	P52799
Formulation	Rabbit IgG in phosphate buffered saline , pH 7.4, 150mM NaCl, 0.02% sodium azide and 50% glycerol.
Storage	Store at +4°C short term. Store at -20°C long term. Avoid freeze / thaw cycle.

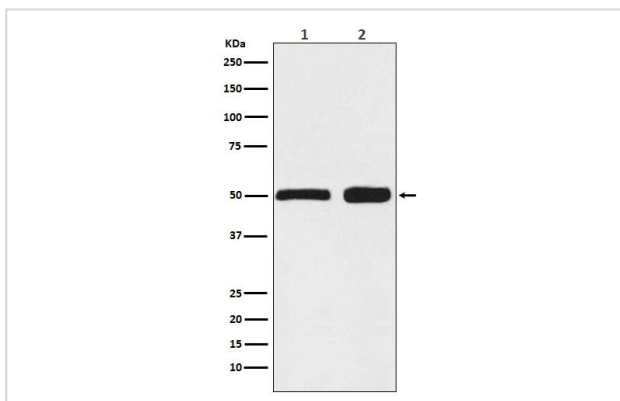
## Application Details

WB 1:500~1:2000 ICC/IF 1:50~1:200

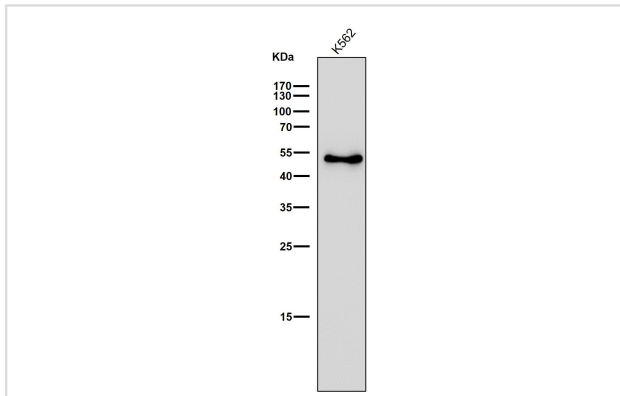
## Images



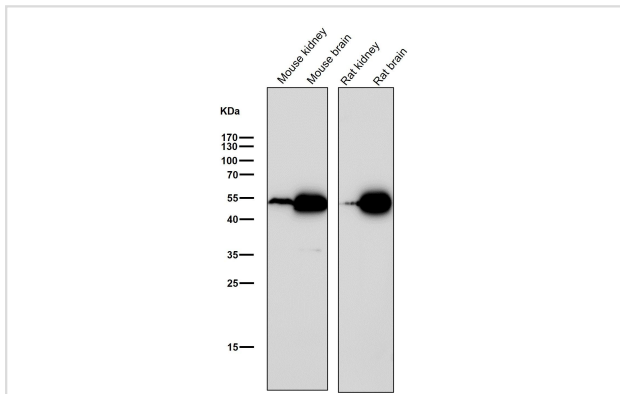
All Lanes: Ephrin B2 Antibody at 1/ 1000 dilution. Lane1:HeLa.Lane2:293.Lane3:MCF-7.Lane4:K562.Lane5:U-87 MG.(Proteins at 20ug per lane)Secondary: Goat Anti-Rabbit IgG(HRP) at 1/20000 dilution Predicted band size : 50kDa Observed band size: 50kDa



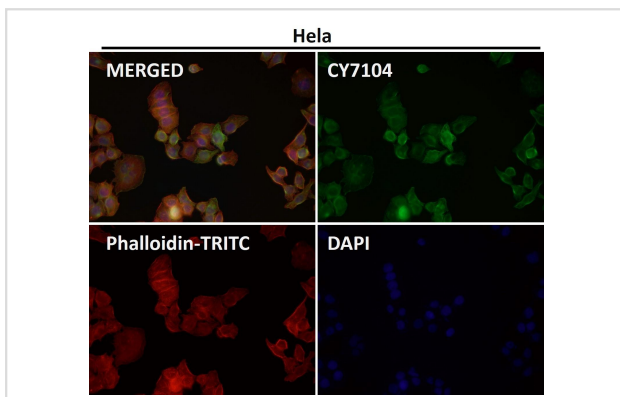
All Lanes: Ephrin B2 Antibody at 1/ 1000 dilution.Lane1: HEK293 cell lysate.Lane2:Mouse spleen lysate.(Proteins at 20ug per lane)Secondary: Goat Anti-Rabbit IgG(HRP) at 1/20000 dilutionPredicted band size : 50kDaObserved band size: 50kDa



All Lanes: Ephrin B2 Antibody at 1/ 1000 dilution.Lane1:K562.Proteins at 20ug per laneSecondary: Goat Anti-Rabbit IgG(HRP) at 1/20000 dilutionPredicted band size : 50kDaObserved band size: 50kDa



All Lanes: Ephrin B2 Antibody at 1/ 1000 dilution.Lane1:Mouse kidney.Lane2:Mouse brain.Lane3:Rat kidney.Lane4:Rat brain.(Proteins at 20ug per lane)Secondary: Goat Anti-Rabbit IgG(HRP) at 1/20000 dilutionPredicted band size : 50kDaObserved band size: 50kDa



Immunofluorescent analysis using the Antibody at 1:50 dilution.4% polyformaldehyde fixed. 0.1% tritonX-100 permeable. DAPI stains the nucleus.

## Product Description

Cell surface transmembrane ligand for Eph receptors, a family of receptor tyrosine kinases which are crucial for migration, repulsion and adhesion during neuronal, vascular and epithelial development. Binds promiscuously Eph receptors residing on adjacent cells, leading to contact-dependent bidirectional signaling into neighboring cells.

## Background

Cell surface transmembrane ligand for Eph receptors, a family of receptor tyrosine kinases which are crucial for migration, repulsion and adhesion

during neuronal, vascular and epithelial development. Binds promiscuously Eph receptors residing on adjacent cells, leading to contact-dependent bidirectional signaling into neighboring cells.

---

Note: This product is for in vitro research use only