

LOXL2 Rabbit mAb

Catalog No: #59581

Package Size: #59581-1 50ul #59581-2 100ul

Orders: order@signalwayantibody.com

Support: tech@signalwayantibody.com

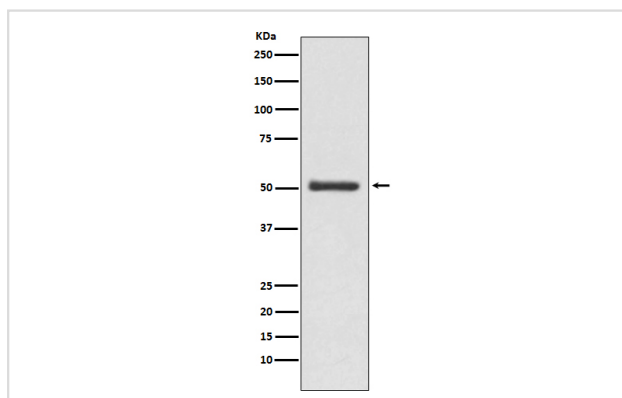
Description

Product Name	LOXL2 Rabbit mAb
Host Species	Rabbit
Clonality	Monoclonal
Isotype	Rabbit IgG
Purification	Affinity-chromatography
Applications	WB ICC/IF FC
Species Reactivity	Human Mouse Rat
Specificity	LOXL2 Antibody detects endogenous levels of total LOXL2
Immunogen Description	A synthesized peptide derived from human LOXL2
Other Names	LOR2; LOX L2; LOXL2; Lysyl oxidase homolog 2; Lysyl oxidase like 2; WS9 14;
Accession No.	Uniprot:Q9Y4K0
Uniprot	Q9Y4K0
Calculated MW	53,106kDa
Formulation	Rabbit IgG in phosphate buffered saline , pH 7.4, 150mM NaCl, 0.02% sodium azide and 50% glycerol.
Storage	Store at +4°C short term. Store at -20°C long term. Avoid freeze / thaw cycle.

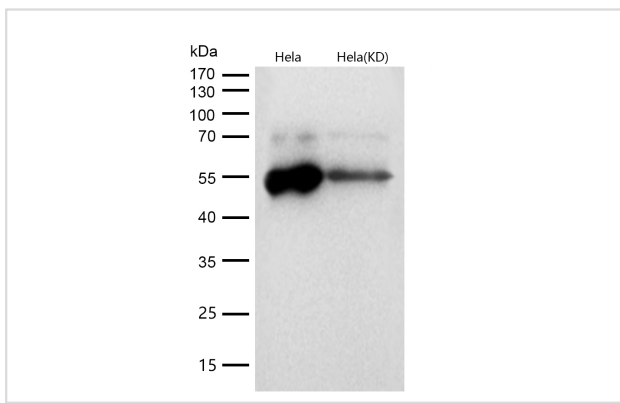
Application Details

WB 1:500~1:2000 ICC/IF 1:50~1:200 FC 1:50

Images



Western blot analysis of LOXL2 expression in MCF7 cell lysate.



All lanes use the Antibody at 1:1K dilution for 1 hour at room temperature.

Product Description

Mediates the post-translational oxidative deamination of lysine residues on target proteins leading to the formation of deaminated lysine (allysine). When secreted in extracellular matrix, promotes cross-linking of extracellular matrix proteins by mediating oxidative deamination of peptidyl lysine residues in precursors to fibrous collagen and elastin.

Background

Mediates the post-translational oxidative deamination of lysine residues on target proteins leading to the formation of deaminated lysine (allysine). When secreted in extracellular matrix, promotes cross-linking of extracellular matrix proteins by mediating oxidative deamination of peptidyl lysine residues in precursors to fibrous collagen and elastin.

Note: This product is for in vitro research use only