

## Lamin B2 Rabbit mAb

Catalog No: #59582

Package Size: #59582-1 50ul #59582-2 100ul

Orders: order@signalwayantibody.com

Support: tech@signalwayantibody.com

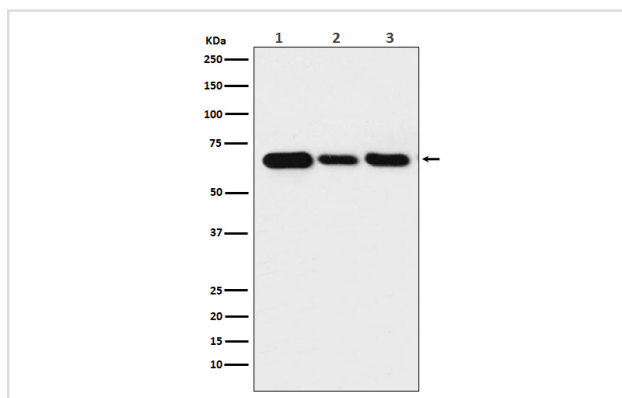
## Description

Product Name	Lamin B2 Rabbit mAb
Host Species	Rabbit
Clonality	Monoclonal
Isotype	Rabbit IgG
Purification	Affinity-chromatography
Applications	WB IHC ICC/IF IP FC
Species Reactivity	Human Mouse Rat
Specificity	Lamin B2 Antibody detects endogenous levels of total Lamin B2
Immunogen Description	A synthesized peptide derived from human Lamin B2
Other Names	LAMB2; LMN 2; LMN B2; LMN2; LMNB2;
Accession No.	Uniprot:Q03252
Uniprot	Q03252
Calculated MW	68kDa
Formulation	Rabbit IgG in phosphate buffered saline , pH 7.4, 150mM NaCl, 0.02% sodium azide and 50% glycerol.
Storage	Store at +4°C short term. Store at -20°C long term. Avoid freeze / thaw cycle.

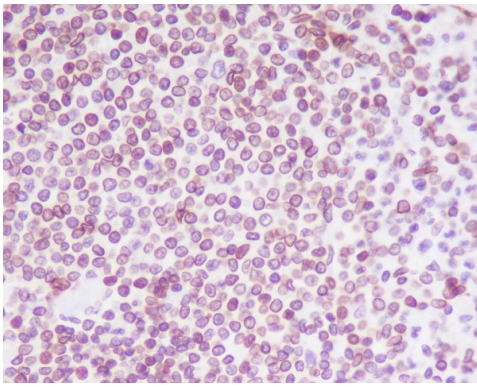
## Application Details

WB 1:500~1:2000 IHC 1:50~1:200 ICC/IF 1:50~1:200 IP 1:50 FC 1:50

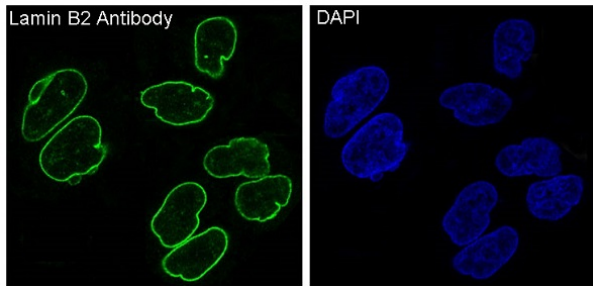
## Images



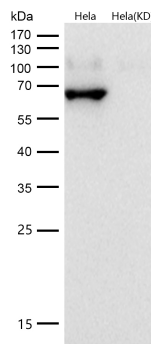
Western blot analysis of Lamin B2 expression in (1) Jurkat cell lysate; (2) NIH/3T3 cell lysate; (3) C6 cell lysate.



Immunohistochemical analysis of paraffin-embedded human spleen, using Lamin B2 Antibody.



Immunofluorescent analysis of HeLa cells, using Lamin B2 Antibody .



All lanes use the Antibody at 1:1K dilution for 1 hour at room temperature.

## Product Description

Lamins are components of the nuclear lamina, a fibrous layer on the nucleoplasmic side of the inner nuclear membrane, which is thought to provide a framework for the nuclear envelope and may also interact with chromatin.

## Background

Lamins are components of the nuclear lamina, a fibrous layer on the nucleoplasmic side of the inner nuclear membrane, which is thought to provide a framework for the nuclear envelope and may also interact with chromatin.

Note: This product is for in vitro research use only