

## ACE1 Rabbit mAb

Catalog No: #59583

Package Size: #59583-1 50ul #59583-2 100ul

Orders: order@signalwayantibody.com

Support: tech@signalwayantibody.com

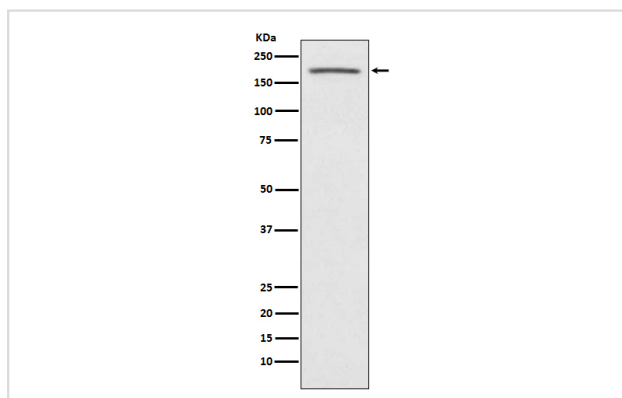
## Description

Product Name	ACE1 Rabbit mAb
Host Species	Rabbit
Clonality	Monoclonal
Isotype	Rabbit IgG
Purification	Affinity-chromatography
Applications	WB IHC FC
Species Reactivity	Human Mouse
Specificity	ACE1 Antibody detects endogenous levels of total ACE1
Immunogen Description	A synthesized peptide derived from human ACE1
Other Names	Angiotensin-converting enzyme; somatic isoform precursor; CD143 antigen; DCP; DCP1; Dipeptidyl carboxypeptidase I; Kininase II;
Accession No.	Uniprot:P12821
Uniprot	P12821
Formulation	Rabbit IgG in phosphate buffered saline , pH 7.4, 150mM NaCl, 0.02% sodium azide and 50% glycerol.
Storage	Store at +4°C short term. Store at -20°C long term. Avoid freeze / thaw cycle.

## Application Details

WB 1:500~1:1000 IHC 1:50~1:200 FC 1:30

## Images



Western blot analysis of ACE1 expression in human fetal kidney lysate.

## Product Description

Converts angiotensin I to angiotensin II by release of the terminal His-Leu, this results in an increase of the vasoconstrictor activity of angiotensin. Also able to inactivate bradykinin, a potent vasodilator. Has also a glycosidase activity which releases GPI-anchored proteins from the membrane by cleaving the mannose linkage in the GPI moiety.

## Background

---

Converts angiotensin I to angiotensin II by release of the terminal His-Leu, this results in an increase of the vasoconstrictor activity of angiotensin. Also able to inactivate bradykinin, a potent vasodilator. Has also a glycosidase activity which releases GPI-anchored proteins from the membrane by cleaving the mannose linkage in the GPI moiety.

---

Note: This product is for in vitro research use only