

IKB epsilon Rabbit mAb

Catalog No: #59587

Package Size: #59587-1 50ul #59587-2 100ul

Orders: order@signalwayantibody.com

Support: tech@signalwayantibody.com

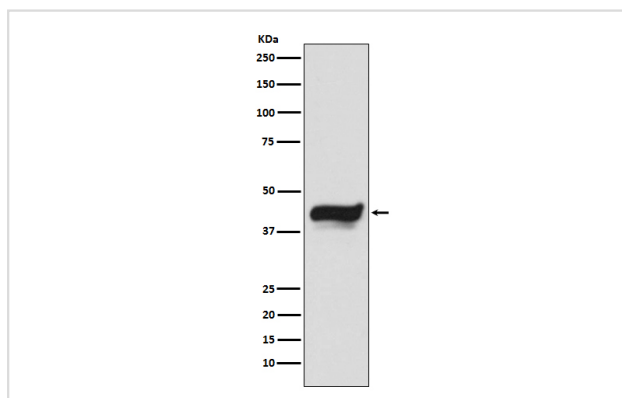
Description

Product Name	IKB epsilon Rabbit mAb
Host Species	Rabbit
Clonality	Monoclonal
Isotype	Rabbit IgG
Purification	Affinity-chromatography
Applications	WB IHC ICC IP
Species Reactivity	Human
Specificity	IKB epsilon Antibody detects endogenous levels of total IKB epsilon
Immunogen Description	A synthesized peptide derived from human IKB epsilon
Other Names	I-kappa-B-epsilon; IkappaBepsilon; Ikb-E; Ikb-epsilon; IKBE; NF-kappa-B inhibitor epsilon; NF-kappa-BIE; NFKBIE;
Accession No.	Uniprot:O00221
Uniprot	O00221
Formulation	Rabbit IgG in phosphate buffered saline , pH 7.4, 150mM NaCl, 0.02% sodium azide and 50% glycerol.
Storage	Store at +4°C short term. Store at -20°C long term. Avoid freeze / thaw cycle.

Application Details

WB 1:500~1:2000 IHC 1:50~1:200 ICC/IF 1:50~1:200 IP 1:50

Images



Western blot analysis of IKB epsilon expression in HeLa cell lysate.

Product Description

Inhibits NF-kappa-B by complexing with and trapping it in the cytoplasm. Inhibits DNA-binding of NF-kappa-B p50-p65 and p50-c-Rel complexes.

Background

Inhibits NF-kappa-B by complexing with and trapping it in the cytoplasm. Inhibits DNA-binding of NF-kappa-B p50-p65 and p50-c-Rel complexes.

Note: This product is for in vitro research use only