

Skp1 Rabbit mAb

Catalog No: #59591

Package Size: #59591-1 50ul #59591-2 100ul

Orders: order@signalwayantibody.com

Support: tech@signalwayantibody.com

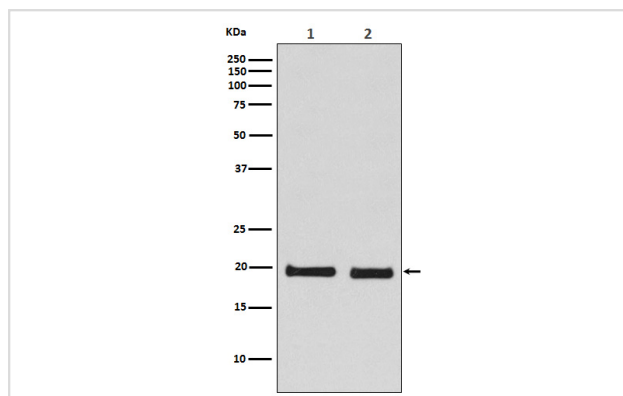
Description

Product Name	Skp1 Rabbit mAb
Host Species	Rabbit
Clonality	Monoclonal
Isotype	Rabbit IgG
Purification	Affinity-chromatography
Applications	WB ICC/IF FC
Species Reactivity	Human Mouse Rat
Specificity	Skp1 Antibody detects endogenous levels of total Skp1
Immunogen Description	A synthesized peptide derived from human Skp1
Other Names	OCP2; p19A; EMC19; SKP1A; OCP-II; TCEB1L;
Accession No.	Uniprot:P63208
Uniprot	P63208
Formulation	Rabbit IgG in phosphate buffered saline , pH 7.4, 150mM NaCl, 0.02% sodium azide and 50% glycerol.
Storage	Store at +4°C short term. Store at -20°C long term. Avoid freeze / thaw cycle.

Application Details

WB 1:500~1:2000 ICC/IF 1:50~1:200 FC 1:100

Images



Western blot analysis of Skp1 expression in (1) 293T cell lysate; (2) NIH/3T3 cell lysate.

Product Description

Essential component of the SCF (SKP1-CUL1-F-box protein) ubiquitin ligase complex, which mediates the ubiquitination of proteins involved in cell cycle progression, signal transduction and transcription.

Background

Essential component of the SCF (SKP1-CUL1-F-box protein) ubiquitin ligase complex, which mediates the ubiquitination of proteins involved in cell cycle progression, signal transduction and transcription.

Note: This product is for in vitro research use only