

alpha 1 Antichymotrypsin Rabbit mAb

Catalog No: #59597

Package Size: #59597-1 50ul #59597-2 100ul

Orders: order@signalwayantibody.com

Support: tech@signalwayantibody.com

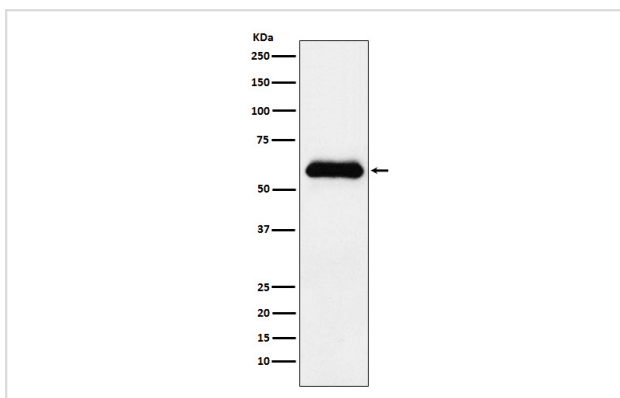
Description

Product Name	alpha 1 Antichymotrypsin Rabbit mAb
Host Species	Rabbit
Clonality	Monoclonal
Isotype	Rabbit IgG
Purification	Affinity-chromatography
Applications	WB IHC ICC/IF IP
Species Reactivity	Human
Specificity	alpha 1 Antichymotrypsin Antibody detects endogenous levels of total alpha 1 Antichymotrypsin
Immunogen Description	A synthesized peptide derived from human alpha 1 Antichymotrypsin
Other Names	SERPINA3; AACT; ACT; Antichymotrypsin; GIG24; GIG25; Serpin A3; SERPINA3;
Accession No.	Uniprot:P01011
Uniprot	P01011
Formulation	Rabbit IgG in phosphate buffered saline , pH 7.4, 150mM NaCl, 0.02% sodium azide and 50% glycerol.
Storage	Store at +4°C short term. Store at -20°C long term. Avoid freeze / thaw cycle.

Application Details

WB 1:500~1:1000 IHC 1:100~1:500 ICC/IF 1:50~1:200 IP 1:30

Images



Western blot analysis of alpha 1 Antichymotrypsin expression in human plasma lysate.

Product Description

Although its physiological function is unclear, it can inhibit neutrophil cathepsin G and mast cell chymase, both of which can convert angiotensin-1 to the active angiotensin-2.

Background

Although its physiological function is unclear, it can inhibit neutrophil cathepsin G and mast cell chymase, both of which can convert angiotensin-1 to the active angiotensin-2.

Note: This product is for in vitro research use only