

## gamma Synuclein Rabbit mAb

Catalog No: #59598

Package Size: #59598-1 50ul #59598-2 100ul

Orders: order@signalwayantibody.com

Support: tech@signalwayantibody.com

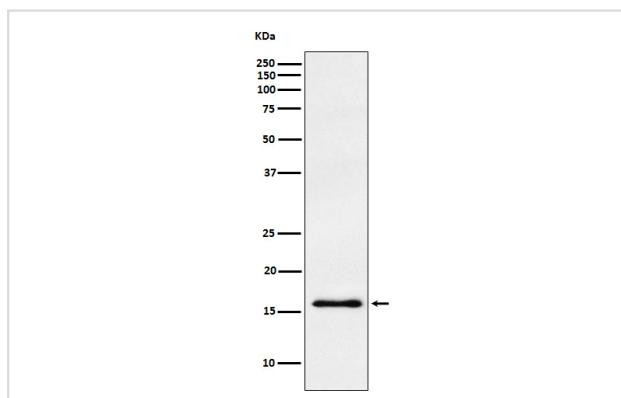
## Description

Product Name	gamma Synuclein Rabbit mAb
Host Species	Rabbit
Clonality	Monoclonal
Isotype	Rabbit IgG
Purification	Affinity-chromatography
Applications	WB IHC ICC IP FC
Species Reactivity	Human Rat
Specificity	gamma Synuclein Antibody detects endogenous levels of total gamma Synuclein
Immunogen Description	A synthesized peptide derived from human gamma Synuclein
Other Names	BCSG1; Breast cancer specific gene 1 protein; Gamma synuclein; Persyn; PRSN; SNCG; SR; Synoretin; Synuclein gamma;
Accession No.	Uniprot:O76070
Uniprot	O76070
Formulation	Rabbit IgG in phosphate buffered saline , pH 7.4, 150mM NaCl, 0.02% sodium azide and 50% glycerol.
Storage	Store at +4°C short term. Store at -20°C long term. Avoid freeze / thaw cycle.

## Application Details

WB 1:500~1:2000 IHC 1:50~1:200 ICC/IF 1:50~1:200 IP 1:20 FC 1:30

## Images



Western blot analysis of gamma Synuclein expression in human fetal brain lysate.

## Product Description

Plays a role in neurofilament network integrity. May be involved in modulating axonal architecture during development and in the adult. In vitro, increases the susceptibility of neurofilament-H to calcium-dependent proteases (By similarity).

## Background

---

Plays a role in neurofilament network integrity. May be involved in modulating axonal architecture during development and in the adult. In vitro, increases the susceptibility of neurofilament-H to calcium-dependent proteases (By similarity).

---

Note: This product is for in vitro research use only