

## Mad2L2 Rabbit mAb

Catalog No: #59599

Package Size: #59599-1 50ul #59599-2 100ul

Orders: order@signalwayantibody.com

Support: tech@signalwayantibody.com

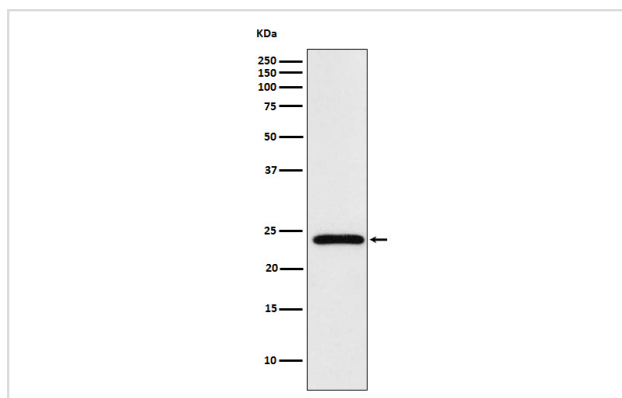
## Description

Product Name	Mad2L2 Rabbit mAb
Host Species	Rabbit
Clonality	Monoclonal
Isotype	Rabbit IgG
Purification	Affinity-chromatography
Applications	WB IHC ICC/IF IP FC
Species Reactivity	Human Mouse Rat
Specificity	Mad2L2 Antibody detects endogenous levels of total Mad2L2
Immunogen Description	A synthesized peptide derived from human Mad2L2
Other Names	hREV7; MAD2B; Mad2I2 Mitotic Arrest Deficient 2 L2; POLZ2; REV 7; REV7; REV7 homolog;
Accession No.	Uniprot:Q9UI95
Uniprot	Q9UI95
Formulation	Rabbit IgG in phosphate buffered saline , pH 7.4, 150mM NaCl, 0.02% sodium azide and 50% glycerol.
Storage	Store at +4°C short term. Store at -20°C long term. Avoid freeze / thaw cycle.

## Application Details

WB 1:500~1:1000 IHC 1:100~1:500 ICC/IF 1:50~1:200 IP 1:30 FC 1:40

## Images



Western blot analysis of Mad2L2 expression in HeLa cell lysate.

## Product Description

Adapter protein able to interact with different proteins and involved in different biological processes. Mediates the interaction between the error-prone DNA polymerase zeta catalytic subunit REV3L and the inserter polymerase REV1, thereby mediating the second polymerase switching in translesion DNA synthesis.

## Background

---

Adapter protein able to interact with different proteins and involved in different biological processes. Mediates the interaction between the error-prone DNA polymerase zeta catalytic subunit REV3L and the inserter polymerase REV1, thereby mediating the second polymerase switching in translesion DNA synthesis.

---

Note: This product is for in vitro research use only