

Securin Rabbit mAb

Catalog No: #59605

Package Size: #59605-1 50ul #59605-2 100ul

Orders: order@signalwayantibody.com

Support: tech@signalwayantibody.com

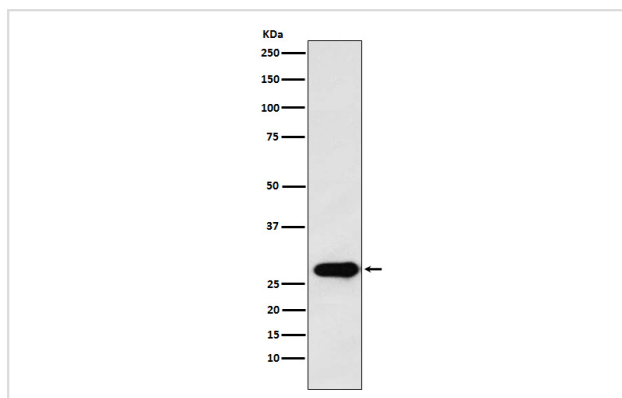
Description

Product Name	Securin Rabbit mAb
Host Species	Rabbit
Clonality	Monoclonal
Isotype	Rabbit IgG
Purification	Affinity-chromatography
Applications	WB IHC ICC/IF IP FC
Species Reactivity	Human
Specificity	Securin Antibody detects endogenous levels of total Securin
Immunogen Description	A synthesized peptide derived from human Securin
Other Names	Cut2; EAP1; hPTTG; Pds1; PTTG; PTTG1; Pttg3; Securin; TUTR1;
Accession No.	Uniprot:O95997/Q6IAL9
Uniprot	O95997/Q6IAL9
Formulation	Rabbit IgG in phosphate buffered saline , pH 7.4, 150mM NaCl, 0.02% sodium azide and 50% glycerol.
Storage	Store at +4°C short term. Store at -20°C long term. Avoid freeze / thaw cycle.

Application Details

WB 1:1000~1:5000 IHC 1:50~1:200 ICC/IF 1:50~1:200 IP 1:30 FC 1:50

Images



Western blot analysis of Securin expression in HeLa cell lysate.

Product Description

Regulatory protein, which plays a central role in chromosome stability, in the p53/TP53 pathway, and DNA repair. Probably acts by blocking the action of key proteins. During the mitosis, it blocks Separase/ESPL1 function, preventing the proteolysis of the cohesin complex and the subsequent segregation of the chromosomes.

Background

Regulatory protein, which plays a central role in chromosome stability, in the p53/TP53 pathway, and DNA repair. Probably acts by blocking the action of key proteins. During the mitosis, it blocks Separase/ESPL1 function, preventing the proteolysis of the cohesin complex and the subsequent segregation of the chromosomes.

Note: This product is for in vitro research use only