

Galectin 1 Rabbit mAb

Catalog No: #59606

Package Size: #59606-1 50ul #59606-2 100ul

Orders: order@signalwayantibody.com

Support: tech@signalwayantibody.com

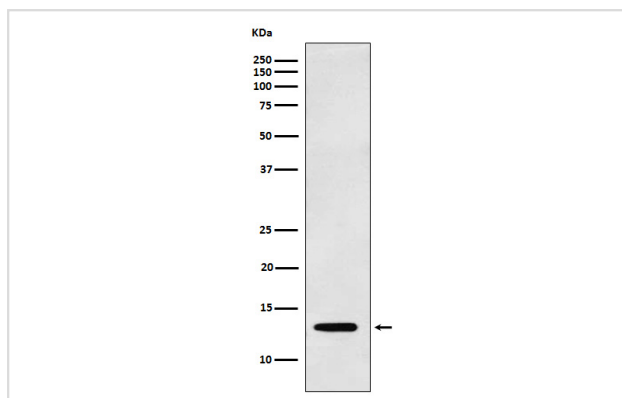
Description

Product Name	Galectin 1 Rabbit mAb
Host Species	Rabbit
Clonality	Monoclonal
Isotype	Rabbit IgG
Purification	Affinity-chromatography
Applications	WB IHC IP
Species Reactivity	Human Mouse Rat
Specificity	Galectin 1 Antibody detects endogenous levels of total Galectin 1
Immunogen Description	A synthesized peptide derived from human Galectin 1
Other Names	GAL1; Galaptin; Galbp; Galectin; Galectin1; GBP; HBL; HLBP14; HPL; L14; Lect14; LGALS1;
Accession No.	Uniprot:P09382
Uniprot	P09382
Formulation	Rabbit IgG in phosphate buffered saline , pH 7.4, 150mM NaCl, 0.02% sodium azide and 50% glycerol.
Storage	Store at +4°C short term. Store at -20°C long term. Avoid freeze / thaw cycle.

Application Details

WB 1:500~1:2000 IHC 1:50~1:200 IP 1:50

Images



Western blot analysis of Galectin 1 expression in K562 cell lysate.

Product Description

May regulate apoptosis, cell proliferation and cell differentiation. Binds beta-galactoside and a wide array of complex carbohydrates. Inhibits CD45 protein phosphatase activity and therefore the dephosphorylation of Lyn kinase.

Background

May regulate apoptosis, cell proliferation and cell differentiation. Binds beta-galactoside and a wide array of complex carbohydrates. Inhibits CD45 protein phosphatase activity and therefore the dephosphorylation of Lyn kinase.

Note: This product is for in vitro research use only